

# Biological Resource Center Forage and Turf Species





## Quick Description :

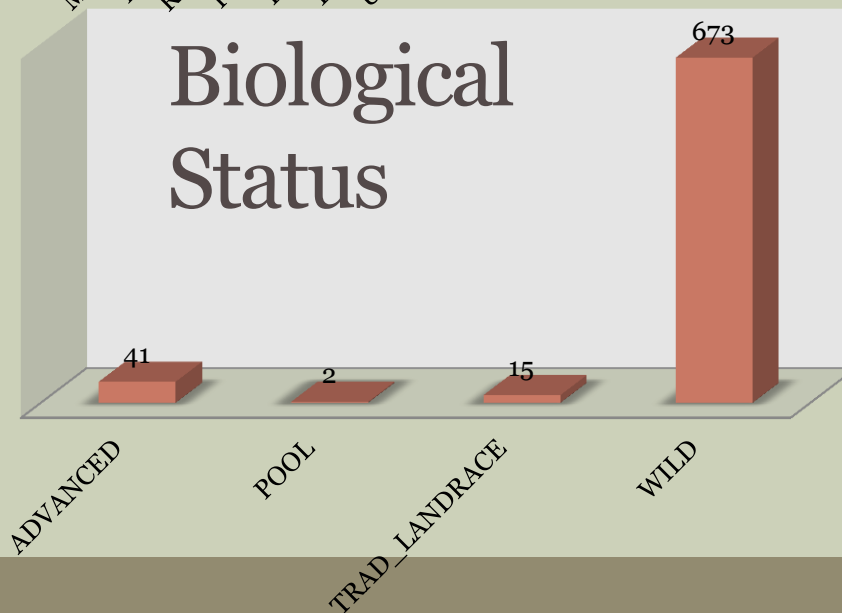
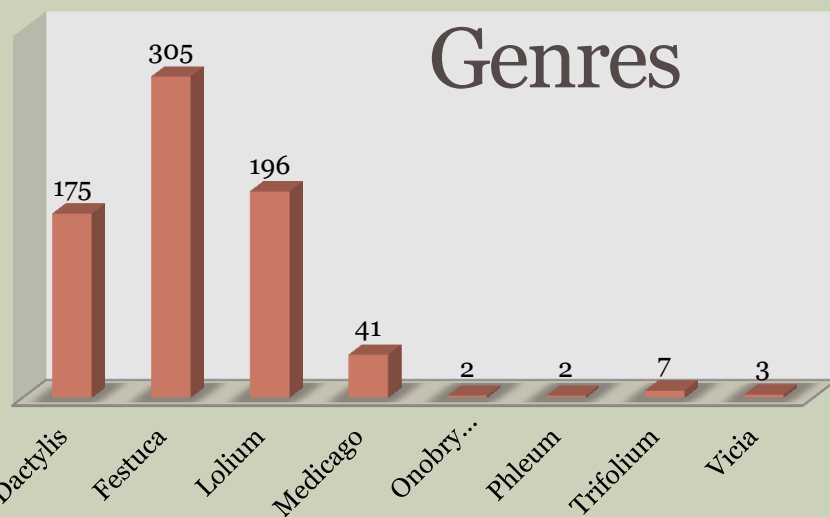
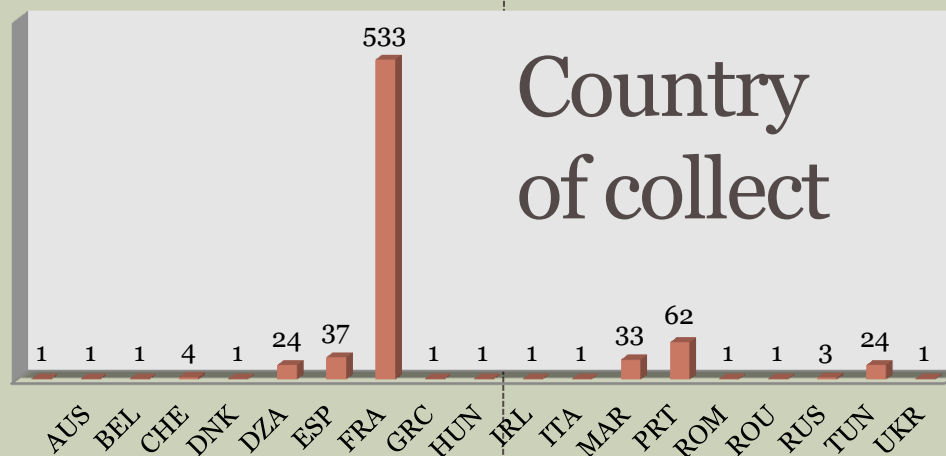
- Keeps in the form of seed, in cold room and in the freezer, 1589 accessions of pop. Natural grasses (*Lolium*, *Festuca*, *Dactylis*) and legumes (*Medicago*, *Trifolium*, *Vicia*) and some varieties.
- Maintains a national collection of 731 accessions as part of a national network
- Represents the national network in the activities of the European network of genetic resources ECP GR and Contributes to the establishment of the AEGIS European collection for forage species.



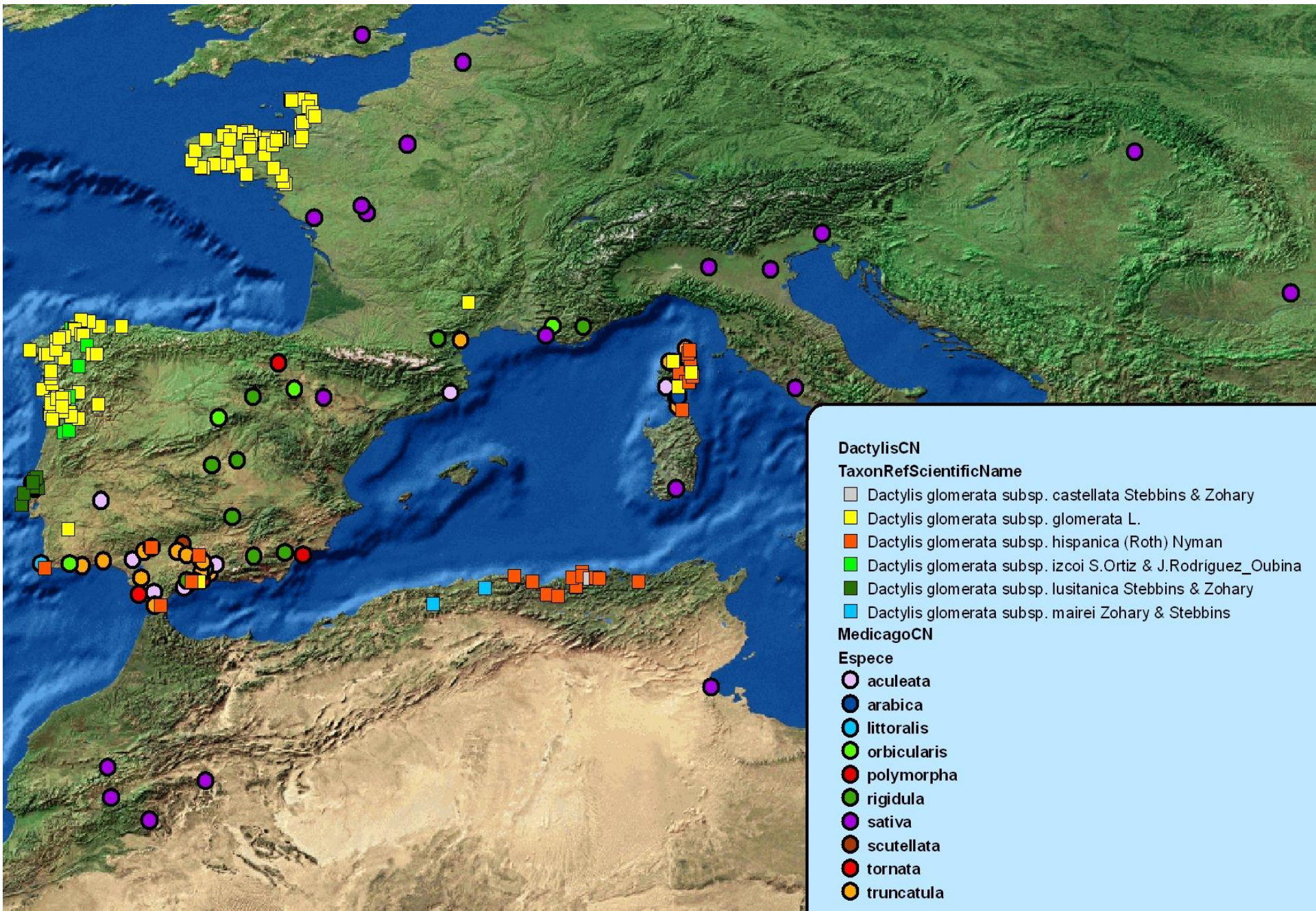
- Personnel: Rémi & Aurélia + Jean-Paul (Scientific manager) + Technical team for field and greenhouse preparation
- Casual labor : 18 weeks
- Area : 1008 m<sup>2</sup> of isolation on one or two hectares (Triticale + Rye), from october to August
- 1 greenhouse, pollen proof, capacity of 6 bacs
- 1 cold room with controlled atmosphere (T°C et Hygrometry) and record of températures + alarm
- 3 freezers controlled by Océasoft software
- Equipments financed by **IBISA** (germination cabinet, oven, seed sorter)



# Description of the national collection



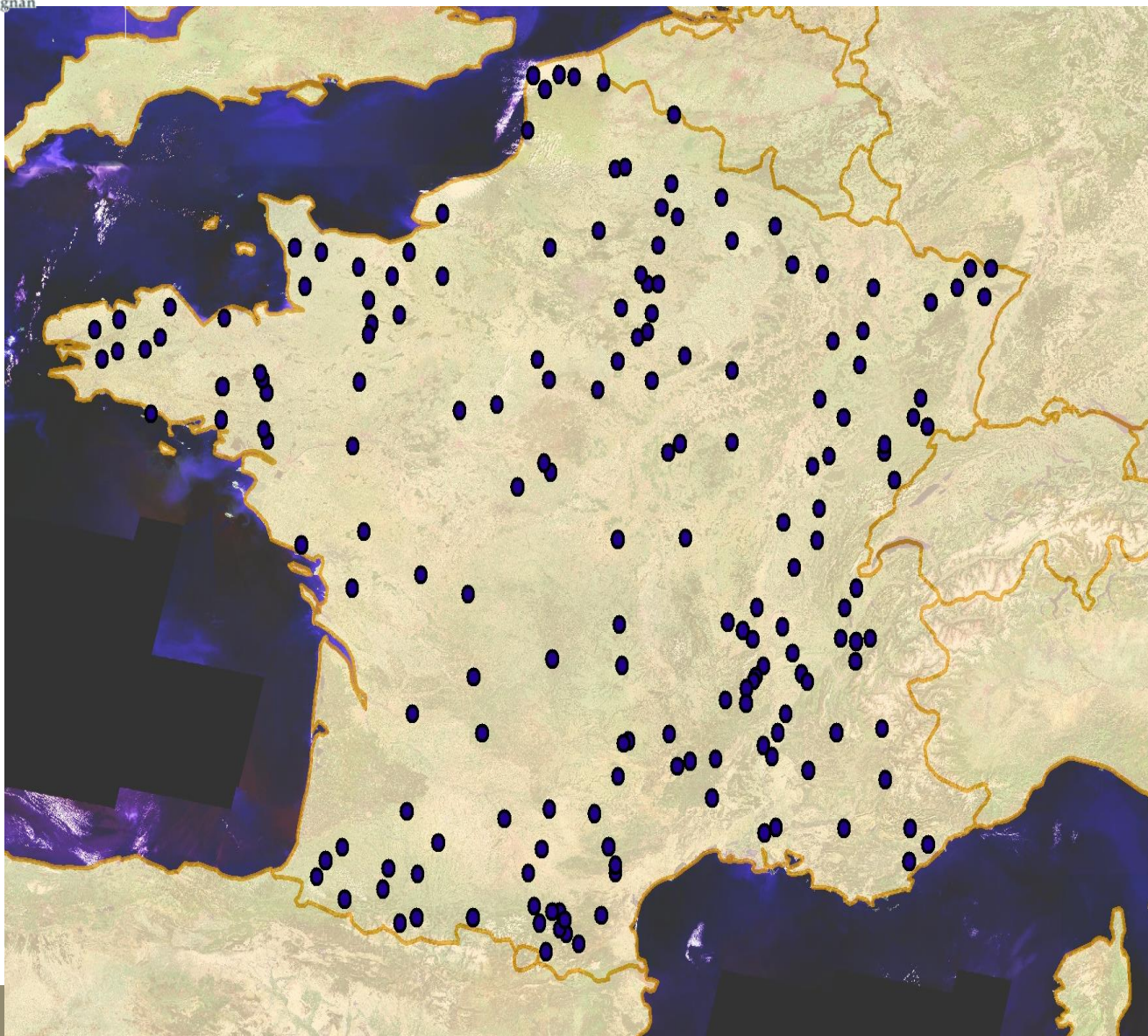
# Medicago and Dactylis (national collections)





INRA UR3F  
SCIENCE & IMPACT Lusignan

# Perennial Lolium (National collection)

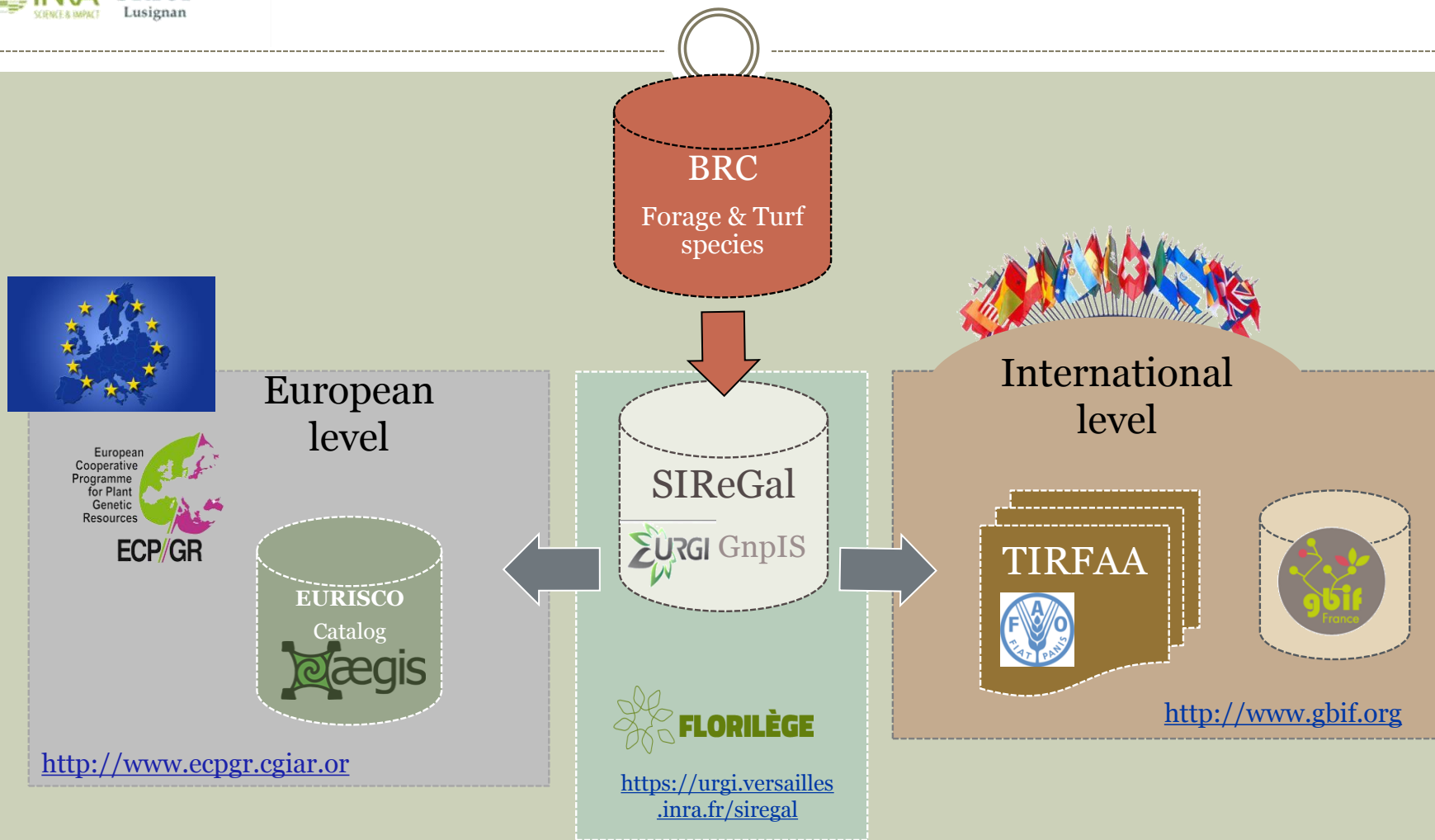


## The accessions of the national collection from :

- Of prospecting,
- Of deleted varieties of private maintainer, only varieties INRA (and no longer commercialized)

## The accessions could be integrated are :

- Others deleted Varieties (Other than INRA) with the maintainer's agreement



**Florilège** is the focal point of entry to the biological resources of plants for agriculture, maintained by the network of CRB Plantes of the French research organizations.



# THE FRENCH PERSPECTIVES

- France is not member of AEGIS, But we introduced the national collection in database AEGIS however :
  - We wait the MoU's signature
  - There is a new organisation between CTPS & Nationale actor, France wants to work about recognition of collection and the curator's collection. For more visibility.
- Lack of funding :
  - Increasing difficulties in finding sustainable ways to finance the activities of BRCs
- Not more collection :
  - All collection are already in the AEGIS's database



- Through **research programs** in which the BRC is involved as a partner :
- **GrassLandscape:** Jean-Paul Sampaou research program: Linking landscape genomics and quantitative genetics for regional adaptation of European grasslands to climate change
  - **ReGaTe:** Abraham Escobar-Gutiérrez research program on the germination capacity of populations: Genetic diversity of populations and lawn varieties of English ryegrass and tall fescue for their Germinative response to Temperature

*THE END*



Thanks for your  
attention