

**Legume collections in the Spanish Network. Active collections are indicated in bold.**

Institution	WIEWS Code
Germplasm Bank César Gómez Campo Univ. Politécnica, Madrid	ESP003
<b>National Centre for Plant Genetic Resources (CRF-INIA)</b>	ESP004
Misión Biológica de Galicia – CSIC Pontevedra	ESP009
<b>Agricultural Research Centre Finca la Orden Valdesequera, Badajoz</b>	ESP010
Neiker – Tecnalia Basque County	ESP016
Germplasm Bank Univ. Politécnica de Valencia	ESP026
Research and Technological Centre for Food and Agriculture of Aragón	ESP027
<b>Service for Agricultural Research and Development, Asturias</b>	ESP032
IFAPA Córdoba	ESP046
Univ. Politécnica de Cataluña Barcelona	ESP061
ITACyL Valladolid	ESP109
ICIA, La Orotova Acclimation Garden Canary Islands	ESP117
<b>Agricultural Research Centre Albaladejito, Cuenca</b>	ESP124
Crop Biodiversity Conservation Centre Tenerife, Canary Islands	ESP172
IMIDRA Madrid	ESP198
Institute for Agronomic Research Balears Islands	ESP200
Total	

# Global data of the Spanish grain legumes Collection

16 Institutions or banks

UC = 24,886

UD = 14.274

IC = UD/UC = 1.7434 < 2.0

ICB = 0.4947; only  $\approx 50\%$  of the accessions are duplicated in the base collection

ICA = 1.2487;  $\approx 25\%$  of the accessions are in two active collections

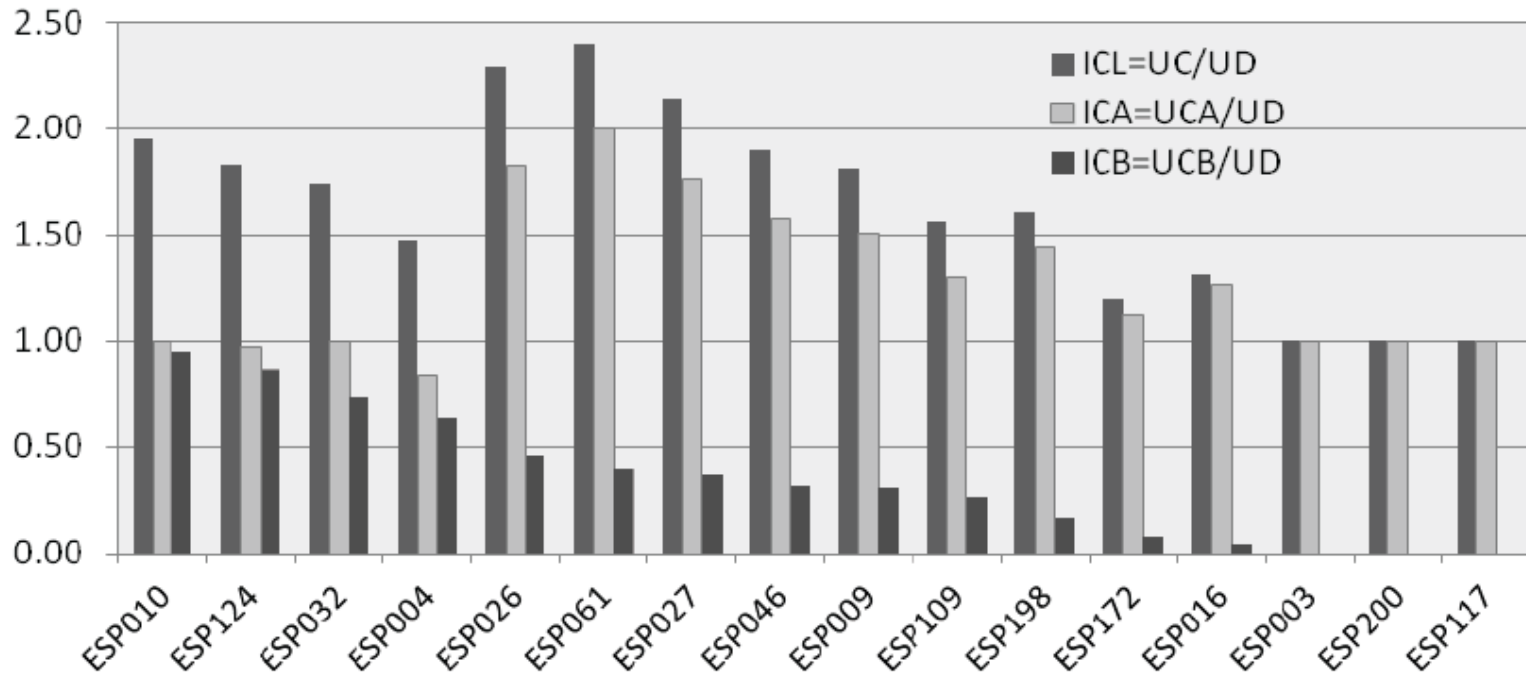
UD = Documented units (individual accessions in the National database)

UC = Conserved units (accessions in collections)

A = Active collection

B = Base collection

## Conservation indices of the Spanish grain legume network

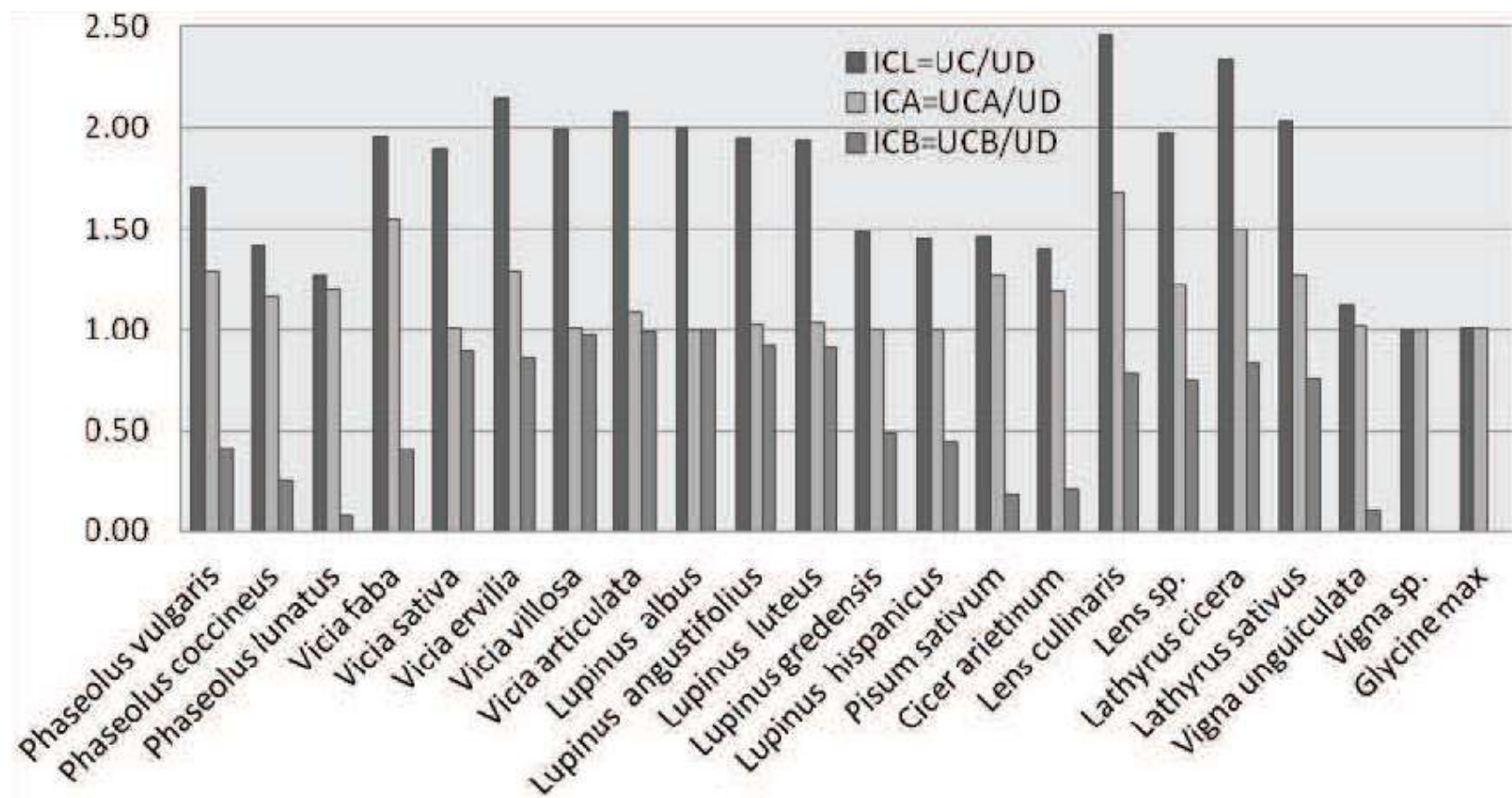


UD = Documented units (individual accessions in the National database)

UC = conserved units (accessions in collections)

A = Active collection

B = Base collection



Modified from De la Rosa et al, 2012.

# Genus *Lens*

<i>Lens</i>	<i>culinaris</i>	<i>orientalis</i>	<i>ervoides</i>	<i>lamottei</i>	<i>nigricans</i>	Total	%
	602	5	1	4	31	643	
Spain	368		1	4	29	402	62.52
Afghanistan	17					17	2.64
Cyprus	2					2	< 1.00
F. Czechoslovakia	3					3	< 1.00
Egypt	1					1	< 1.00
Ethiopia	10					10	1.56
France	10					10	1.56
Germany	2					2	< 1.00
Greece	57					57	8.86
Hungary	2					2	< 1.00
India	10					10	1.56
Iran	10					10	1.56
Israel		5				5	< 1.00
Jordan	6					6	< 1.00
Lebanon	1					1	< 1.00
Libya	1					1	< 1.00
Mexico	4					4	< 1.00
Morocco	6					6	< 1.00
Pakistan	1					1	< 1.00
Portugal	5					5	< 1.00
F. Soviet Union	18					18	2.80
Syria	14					14	2.18
Tunisia	1					1	< 1.00
Turkey	14				1	14	2.18
USA	1					1	< 1.00
Yemen	1					1	< 1.00
F. Yugoslavia					1	1	< 1.00
Unknown	37					37	5.75

## Genus *Pisum*

<i>Pisum</i>	<i>sativum</i>	<i>arvense</i>	<i>fulvum</i>	Total	%
	1650	1	1	1652	
Spain	582			582	35.23
Afghanistan	3			3	< 1.00
Albania	4			4	< 1.00
Argentina	7			7	< 1.00
Australia	7			7	< 1.00
Belgium	1			1	< 1.00
Bulgaria	12			12	< 1.00
Canada	1			1	< 1.00
China	1			1	< 1.00
Denmark	13			13	< 1.00
Egypt	1			1	< 1.00
Ethiopia	3			3	< 1.00
France	166			166	10.05
Germany	27			27	1.63
Greece	6			6	< 1.00
India	4			4	< 1.00
Italy	1			1	< 1.00
Japan	3			3	< 1.00
Jordan	1			1	< 1.00
Mongolia	2			2	< 1.00
Netherlands	4			4	< 1.00
Peru	7			7	< 1.00
Poland	13			13	< 1.00
Portugal	30			30	1.82
Rumania	1			1	< 1.00
Russia	7			7	< 1.00
Sudan	1			1	< 1.00
Sweden	2			2	< 1.00
Syria	5			5	< 1.00
Turkey	1			1	< 1.00
U.K.	195			195	11.80
USA	74			74	4.48
Unknown	465	1	1	467	28.27

<i>Vicia</i>	<i>fab</i>	<i>ervilia</i>	<i>sativa</i>	<i>villosa</i>	Total	%
	1642	309	967	139	3057	
Spain	885	223	498	35	1641	53.68
Afghanistan	32	1			33	1.08
Albania		6	5		11	<1.00
Algeria	10				10	<1.00
Argentina	2				2	<1.00
Armenia			1		1	<1.00
Azerbaijan	4				4	<1.00
Bulgaria	19		7		26	<1.00
Byelorussia	1				1	<1.00
China	11				11	<1.00
Colombia	4				4	<1.00
Cyprus	4	1			5	<1.00
F. Czechoslovakia	7		4	2	13	<1.00
Egypt	31		1		31	1.01
Ethiopia	26				26	<1.00
France	19		6		19	<1.00
Georgia	2				2	<1.00
Germany	2		15	2	19	<1.00
Greece	3	39	85	1	128	4.19
Hungary	1		10		11	<1.00
India	9				9	<1.00
Iran	1	9	20	1	31	1.01
Iraq	19				19	<1.00
Israel	2				2	<1.00
Italy	7		8		7	<1.00
Japan	2				2	<1.00
Jordan	3				3	<1.00
Latvia			1		1	<1.00
Lebanon	9				9	<1.00
Lithuania	2		1		3	<1.00
Morocco	9	1			10	<1.00
Mexico	10				10	<1.00
Mongolia			5		5	<1.00
Pakistan	3				3	<1.00
Peru	87		1		88	2.88
Poland			6	2	8	<1.00
Portugal	19		4		23	<1.00
Russia	3		3	1	7	<1.00
F. Soviet Union	18		19	6	43	1.41
Sri Lanka	1				1	<1.00
Sudan	10				10	<1.00
Sweden	2		2		4	<1.00
Syria	19		24		43	1.41
Tajikistan	1				1	<1.00
Tunisia	6				6	<1.00
Turkey	56	9	16	11	92	3.01
Turkmenistan			1		1	<1.00
U.K.	29				29	<1.00
Ukraine	7		3		10	<1.00
USA			1		1	<1.00
Yemen	1				1	<1.00
F. Yugoslavia	1		1		2	<1.00
Unknown	241	20	219	78	558	18.25

## Major *Vicia* species

## Minor *Vicia* species

<i>Vicia</i>	Spain	Greece	Italy	Portugal	Total
					211
<i>articulata</i>	100			12	112
<i>benghalensis</i>	6				6
<i>bithynica</i>	1				1
<i>cirrrosa</i>	5				5
<i>disperma</i>	1				1
<i>filicaulis</i>	1				1
<i>hirsuta</i>				1	1
<i>hybrida</i>	1				1
<i>lutea</i>	13	1			14
<i>monantha</i>	7				7
<i>narbonensis</i>	24		1		25
<i>pannonica</i>	7				7
<i>peregrina</i>	18				18
<i>scandens</i>	6				6
<i>Vicia sp.</i>	6				6



## *Cicer arietinum*

	<i>Cicer<sup>1</sup> arietinum</i>	%
	1362	
Spain	788	57.86
Afghanistan	5	< 1.00
Azerbaijan	1	< 1.00
Cyprus	1	< 1.00
Ethiopia	1	< 1.00
France	1	< 1.00
Greece	7	< 1.00
Hungary	4	< 1.00
India	48	3.52
Iran	69	5.07
Iraq	2	< 1.00
Israel	1	< 1.00
Italy	5	< 1.00
Jordan	10	< 1.00
Lebanon	4	< 1.00
Morocco	11	< 1.00
Mexico	51	3.74
Portugal	75	5.51
Russia	2	< 1.00
F. Soviet Union	22	1.62
Syria	47	3.45
Tunisia	7	< 1.00
Turkey	10	< 1.00
Uganda	1	< 1.00
USA	2	< 1.00
Unknown	187	13.72

1 In addition, two *C. canarensis* accessions, one *C. cuneatum* and one *C. echinospermum* accessions.

## Genus *Lathyrus*

<i>Lathyrus</i>	Spain	France	Italy	Morocco	Peru	Portugal	Unknown	Total
								490
<i>cicera</i>	212						10	222
<i>sativus</i>	188		2	4	1	5	13	213
<i>amphicarpus</i>	1							1
<i>annuus</i>	5							5
<i>aphaca</i>	1							1
<i>clymenum</i>	11							11
<i>hirsutus</i>	3							3
<i>latifolius</i>	1							1
<i>ochrus</i>	5							5
<i>sphaericus</i>	1							1
<i>tingitanus</i>	19							19
<i>Lathyrus sp.</i>	5	1				1	1	8

## Major *Lupinus* species

<i>Lupinus</i>	<i>albus</i>	<i>angustifolius</i>	<i>luteus</i>	Total	%
	742	648	326	1716	
Spain	323	549	131	1003	58.45
Algeria	1			1	
Australia		4		4	
Brazil	1			1	
Chile	6			6	
Cyprus		1		1	
F. Czechoslovakia	1			1	
France	11			11	
Germany	7		3	10	
Greece	13			13	
Hungary	4			4	
India	1			1	
Italia	1			1	
Morocco	1			1	
Netherlands			2	2	
Poland	6	1	14	21	1.22
Portugal	287	81	161	529	30.83
South Africa		3		3	
F. Soviet Union	7		1	8	
Sudan	1			1	
USA	3	2		5	
F. Yugoslavia	4			4	
Unknown	64	7	14	85	4.95

## Minor *Lupinus* species

<i>Lupinus</i>	Spain	Argentina	Peru	Portugal	Russia	Unknown	Total
							243
<i>articus</i>						1	1
<i>cosentinii</i>	7			12			19
<i>gredensis</i>	74			10			84
<i>hispanicus</i>	68			5			73
<i>marie-josephi</i>	2						2
<i>micranthus</i>	6			10			16
<i>mutabilis</i>			21				21
<i>perennis</i>					1		1
<i>polyphylus</i>	1				1	1	3
<i>Lupinus sp.</i>	18	1	3		1		23

## Genus *Phaseolus*

<i>Phaseolus</i>	<i>coccineus</i>	<i>lunatus</i>	<i>vulgaris</i>	<i>sp.</i>	Total	%
	122	42	4078	2	4244	
Spain	106	36	3377	2	3521	82.96
Argentina			121		121	2.85
Bolivia			22		22	
Byelorussia	5				5	
Canada			1		1	
Colombia			12		12	
Ecuador			6		6	
Greece			19		19	
Guatemala			3		3	
Honduras			4		4	
Japan			1		1	
Mexico			3		3	
Morocco	1		1		2	
Peru		5	35		40	
Portugal	8		328		336	7.92
U. K.	1				1	
Unknown	1	1	145		147	3.46

## *Glycine* and *Arachis*

<i>Glycine max</i> <sup>1</sup>	
	132
Canada	1
France	3
Japan	14
Poland	3
Taiwan	2
USA	65
F. Yugoslavia	3
Unknown	41 <sup>1</sup>

<sup>1</sup> Three accessions classified as wild, the rest are cultivar or breeding materials.

*Arachis hypogaea*: 10 accessions, nine cultivated from Spain and one wild from Venezuela.

## Recently added wild *Lens* samples



<i>Lens nigricans</i>
1.- Bacares
2.- Bocairent
3.- El Zahurdón
4.- Granada
5.- Boniches
6.- Brieva
7.- Jabalcuz
8.- La Higuera
9.- Pedraza A
10.- Pedraza B
11.- Piedrahita
12.- Puente de las Herrerías
13.- Sacejo
14.- Yelmo
15.- Castellciutat
16.- Coll de Pallers
17.- La Parròquia d'Hort
18.- Mola Grossa
19.- Prades
20.- Punta Serena A
21.- Punta Serena B
22.- Tirvia

<i>Lens ervoides</i>
26.- Lluç 1
27.- Lluç 2

<i>Lens lamottei</i>
23.- Estepa
24.- Morón de la Frontera
25.- Cabra