



Expert Group meeting on Crop
Wild Relatives of Grain Legumes
and the Trusts continuing on line
survey

Adapting agriculture to climate change: collecting, protecting and preparing crop wild relatives



Luigi Guarino & P...
- The Global Cro...

The Trust's initiative on crop wild relatives

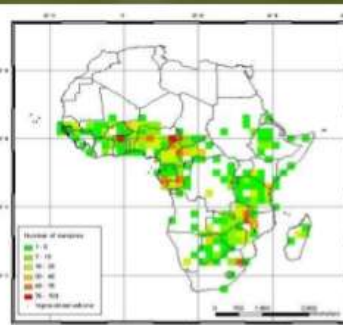
Indicative Project Timeline



ives

Targeting "missing" diversity

- oat: 12 CWR taxa
- rye: 4 CWR taxa
- wheat: 55 CWR taxa



<http://gisweb.ciat.cgiar.org/GapAnalysis/>

Expert Group meeting on *Pisum* scheduled for October 2013