

NordGen migration to GRIN-Global

ECPGR GRIN-Global Workshop, Prague, 18-21/10

NordGen GENBIS

-GG hosted by NordGen (Azure)
nordic-baltic-genebanks.org

-multinational GRIN-Global
Nordic-Baltic countries

– 12 genebanks

–one entry point for users

GRIN-Global Nordic Baltic Genebanks Information System (GENBIS) Welcome!  Cart [Log in](#) [New User](#)

Version: 2.2.0 [Accessions](#) [Descriptors](#) [Reports](#) [GRIN Taxonomy](#) [GRIN](#) [Help](#) [Contact Us](#) [Your Profile](#)



Select the tab for the type of search. Each tab has everything you need to do to perform that type of search.

Return up to

Simple Search

List Search

Advanced Search

Results

Search

This search will show only accessions that have material that may be requested today.



NordGen experience

- 1) Evaluation of db. options
- 2) Planning
- 3) Mapping/data wash to migration
- 4) project close

1) Evaluation of db. options

-define our needs and check needs to available db.

GRIN-Global (www.grin-global.org)

-development team at USDA

-good repository of user manuals and videos

-CGIAR genebanks starting to use GG (growing community)

-little need for in-house development

2) planning

- Existing documentation
- other genebanks experiences
- budget and staffing
- in-house db. competence
(who can do what?)

Recommended GRIN-Global Procedures -
Startup & Ongoing



Revision Date
August 6, 2018

2) planning

TAXONOMY

- USDA taxonomy (decision: allow synonyms or not)
- check your taxonomy vs. USDA taxonomy
- if species are missing request additions: USDA taxonomist

Learn your current and GG db. table relationships etc

Old db. complex or simple -> allocate time and resources

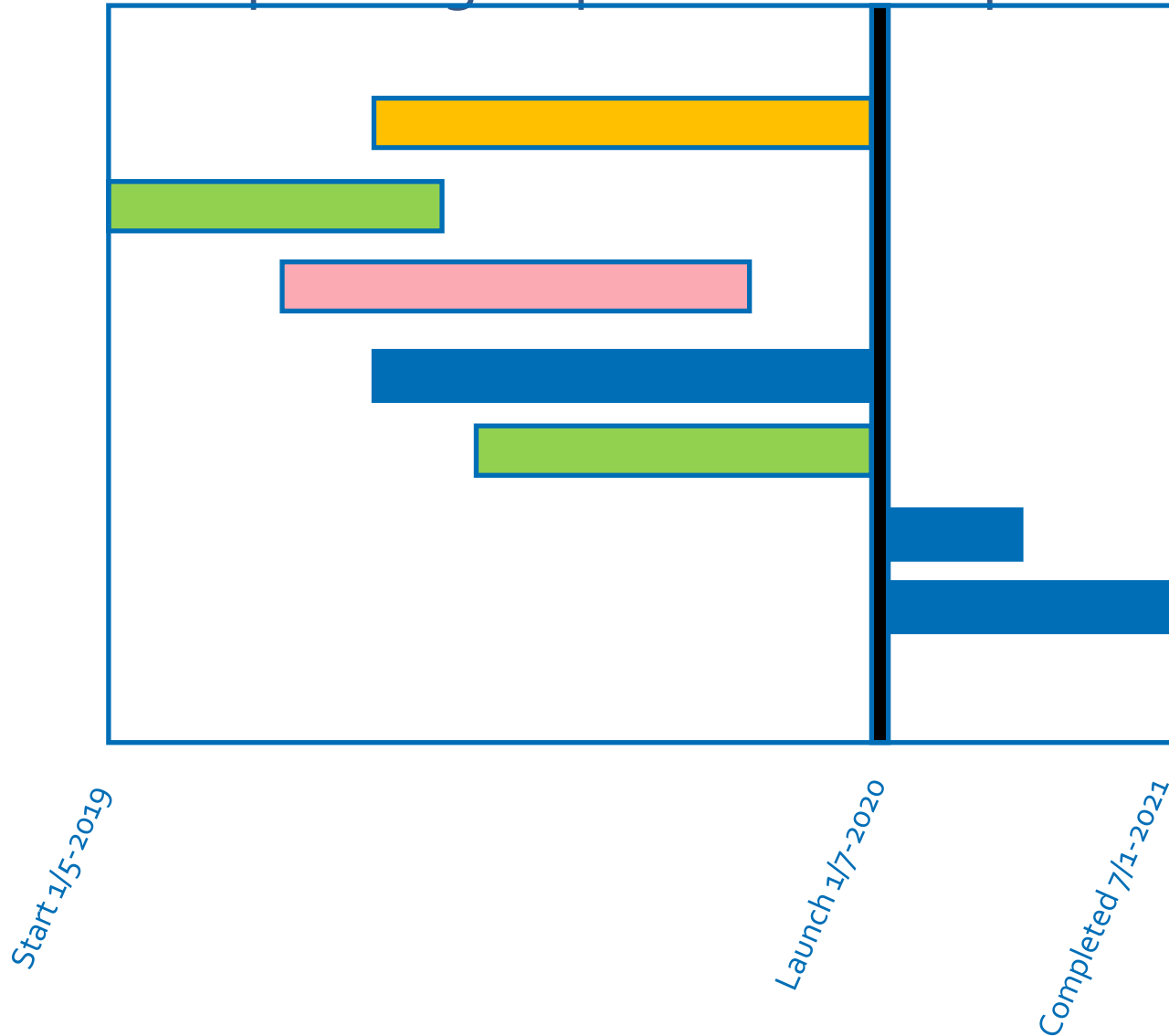
Consult with genebanks that have done migration

NordGen process: map -> scripts (views) -> GG tables -> insert to GG

2) planning

NordGen divided data to separate groups to allow for parallel mapping work

- Cooperator
- Accession part 1
- Inventory
- Orders
- Accession part 2
- Images / Citations
- Crop Trait

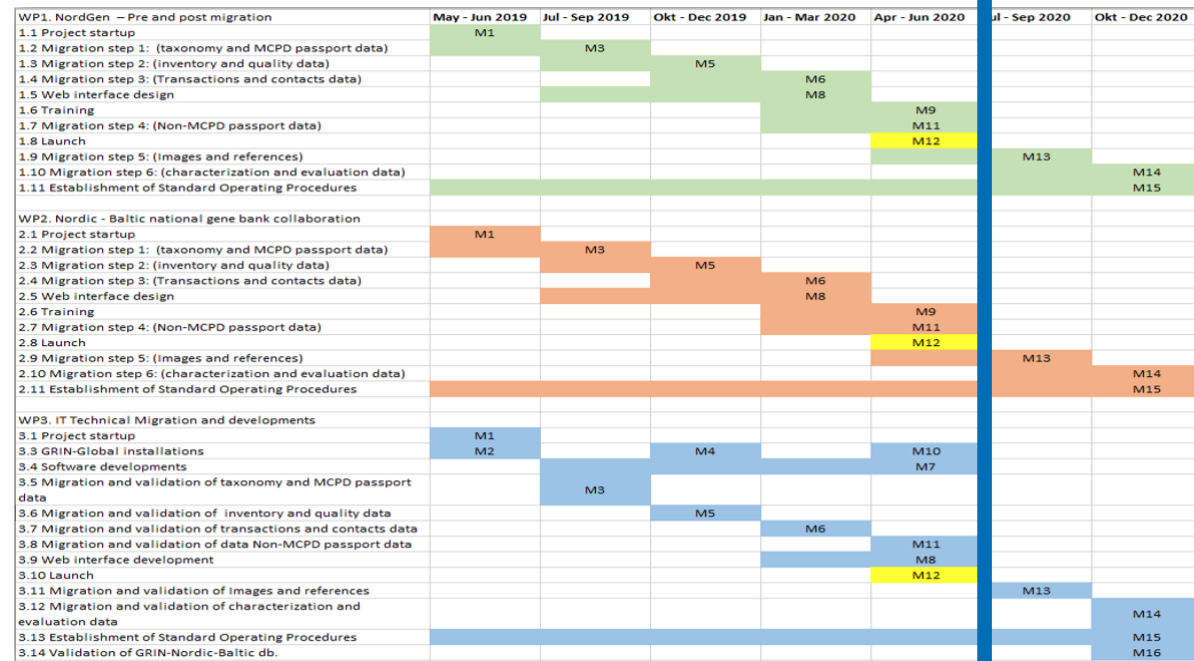


3) Mapping/data wash to migration

Learn all tables and their relationships in your db. and in GG

-www.grin-global.org

-make a plan



4) Project close

Period: April 2019 – Jan 2021

Hours (NordGen): ten thousand

10.000 lines of SQL code (~ 350 A4 pages)

Total cost: 10.7 million SEK
(Euro 972 thousand)

Konto	Utfall	%
Projekt: 928004 Grin Global - Steg 1		
Rörelsens inkomster/intäkter		
3981 Projektanslag NMR	4 236 655,00	99,8
3990 Övriga ersättningar och intäkt	8 264,82	0,2
Summa Inkomster/intäkter	4 244 919,82	100,0
Rörelsens Totala Kostnader		
Rörelsens kostnader		
Ordinarie kostnader		
4600 Övriga konsulttjänster	-3 955 455,37	-93,2
4610 Resekostnader övriga	-27 282,43	-0,6
4611 Konferens/seminarier/workshops	-14 800,00	-0,3
Summa Ordinarie kostnader	-3 997 537,80	-94,2
Övriga externa rörelsekostn.		
5410 Inköp av möbler och utrustning	-4 789,30	-0,1
5420 Programvaror	-3 614,17	-0,1
5800 Resekostnader personal	-11 004,94	-0,3
5930 Tryckningskostnader	-1 738,00	0,0
6071 Representation Extern	-23 377,72	-0,6
6240 Server Cloud	-30 793,56	-0,7
6970 Tidskrifter, facklitteratur	-1 114,00	0,0
Summa Övriga rörelsekostnader	-76 431,69	-1,8
Kostnader personal		
7321 Traktamente Inrikes - skattefr	-625,00	0,0
7322 Traktamenten Inrikes - skattep	-406,00	0,0
7323 Traktamenten Utland - skattefr	-562,95	0,0
7324 Traktamente Utland - skattepli	-1 981,20	0,0
7331 Bilersättning - skattefri	-199,80	0,0
7332 Bilersättning - skattepliktig	-129,60	0,0
7510 Arbetsgivaravgifter SV	-790,78	0,0
7610 Personalutbildning	-202 863,00	-4,8
7630 Personalrepresentation	-979,00	0,0
7690 Övriga personalkostnader	-950,00	0,0
Personalkostnader	-209 487,33	-4,9
Rörelsens kostnader	-4 283 456,82	-100,9
Interna konton		
9010 Ombokn till projekt - lönekost	-6 393 562,07	-150,6
9910 Ombokn - lönekostnader avstämn	0,00	0,0
Interna konton	-6 393 562,07	-150,6
Rörelsens Totala Kostnader	-10 677 018,89	-251,5
Rörelseresultat	-6 432 099,07	-151,5

4) Project close

Train staff at the earliest weeks before launch
or two - four weeks aside after launch for focuses training and workflow
development

Launch in an “easy” period (low volume of db. work)

It will never be perfect (law of diminishing returns)

