



STATUS OF THE NATIONAL ALLIUM COLLECTION - GERMANY

Manuela Nagel

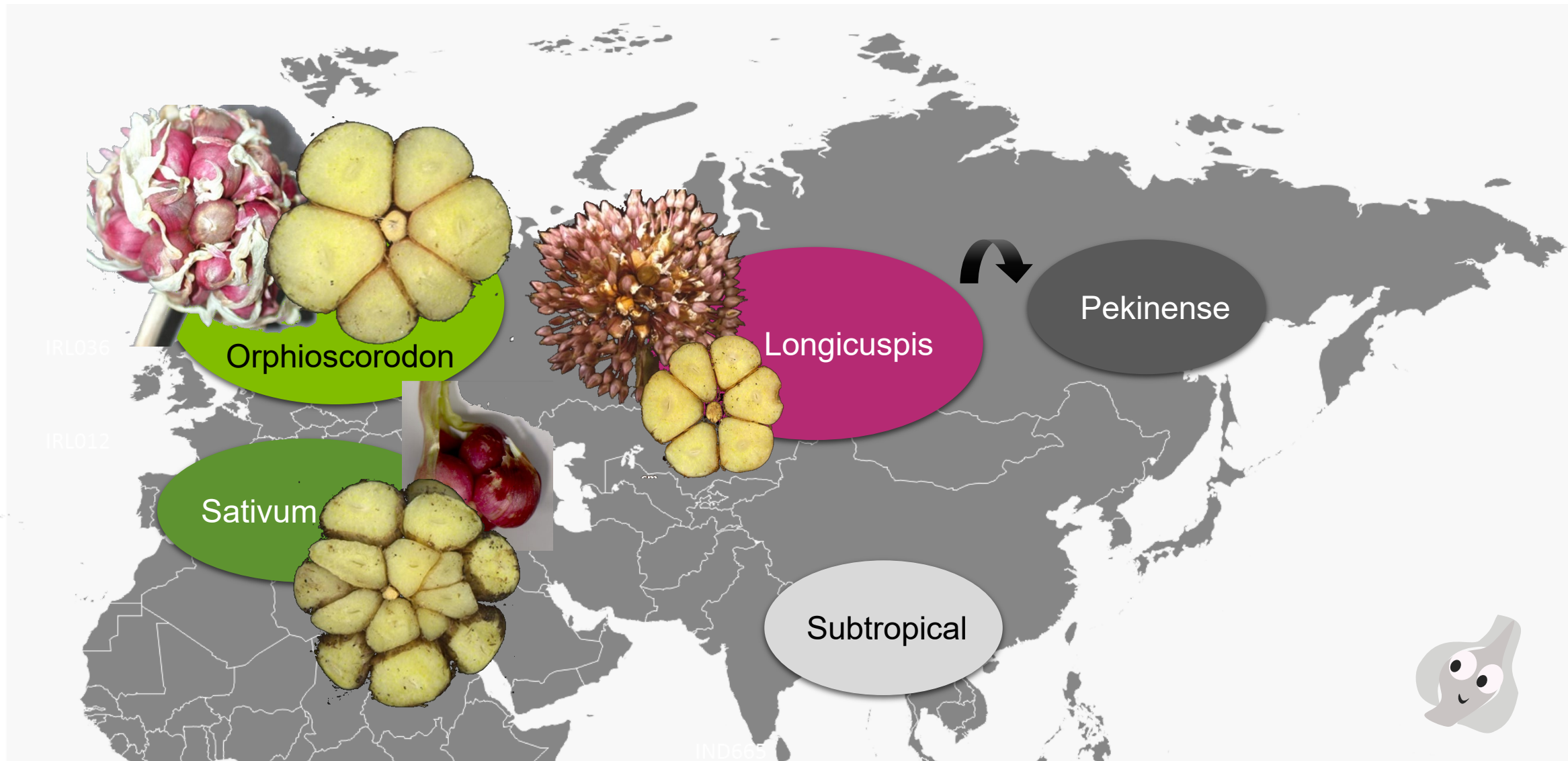


*Seventh Meeting of the Allium Working
Group, 11-12 October 2022, Skierniewice,
Poland*



Photo: M. Nagel (2019)

Geographic distribution and cultivar

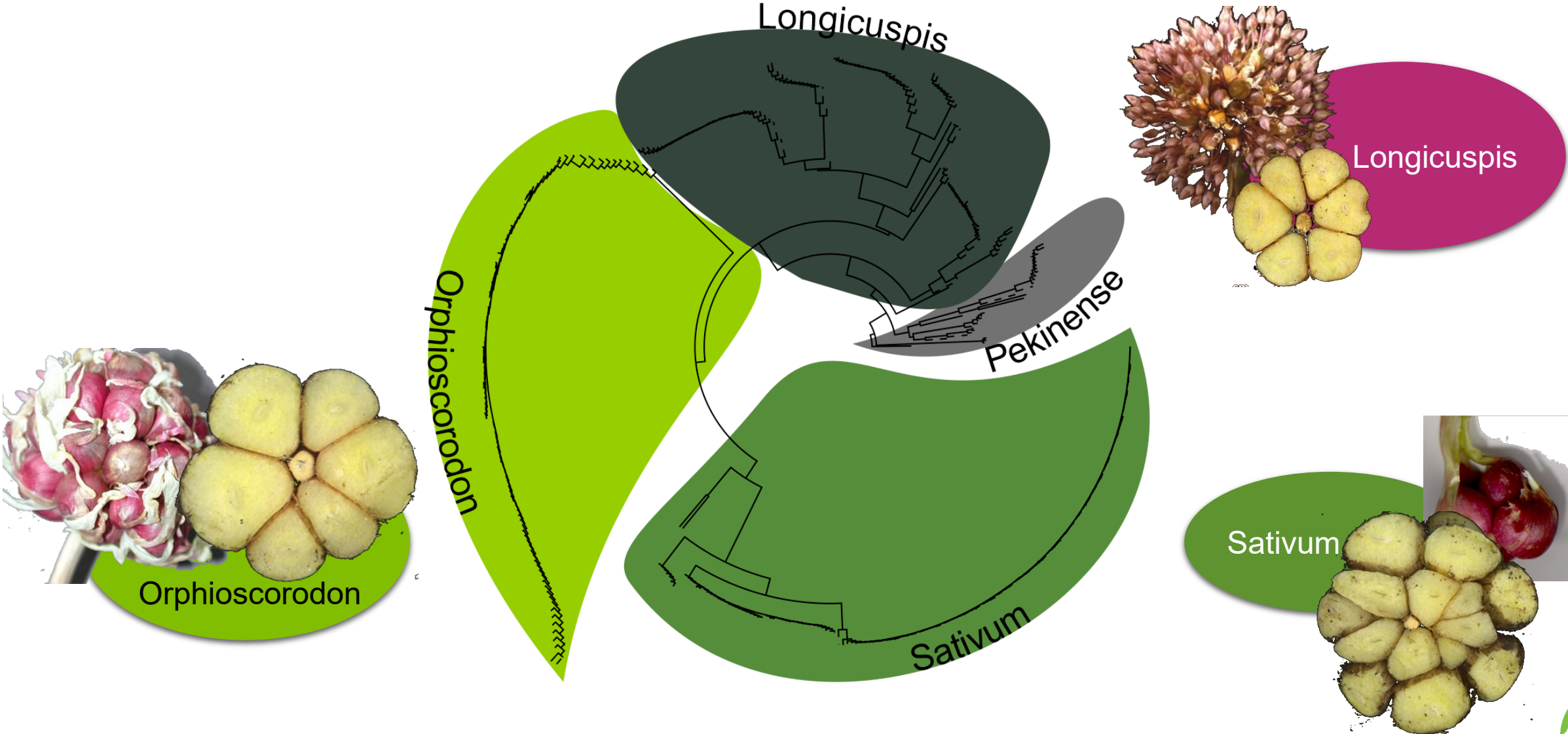


Photos: E.R.J. Keller & H. Müller (2009)

Classification according to Maaß and Klaas (1995)



Phylogenetic tree of 427 garlic accessions



Challenges during garlic cryopreservation



Photo: B. Schäfer (2015)



IPK | Copyright © 2012 IPK Gatersleben
EURALLIVEG Garlic and Shallot Core Collection

-  IPK GATERSLEBEN
- [Home](#)
- [Introduction](#)
- [Garlic and Shallot Core Collection](#)
- [Search Accessions](#)
- [Ontogenesis](#)
- [Contact](#)
- [Imprint](#)



**THE CORE COLLECTION
OF EURALLIVEG'S GARLIC AND
SHALLOT ACCESSIONS**

			
			
ALL 816	ALL 684	ALL 937	ALL 292

Garlic is one of the most important medicinal plants of the world and an esteemed spice crop.
IPK is the host of one of the largest garlic germplasm collections of Europe.



<https://apex.ipk-gatersleben.de/apex/f?p=235:1:.....>



Future plans for Allium

- Analysis and additional phenotyping when genotyping is finished

Allium webportal

Passport
GBIS

GBS Data

Image
database

Phylogeny

GWAS

Voucher
Speciemen



Stephan Weise

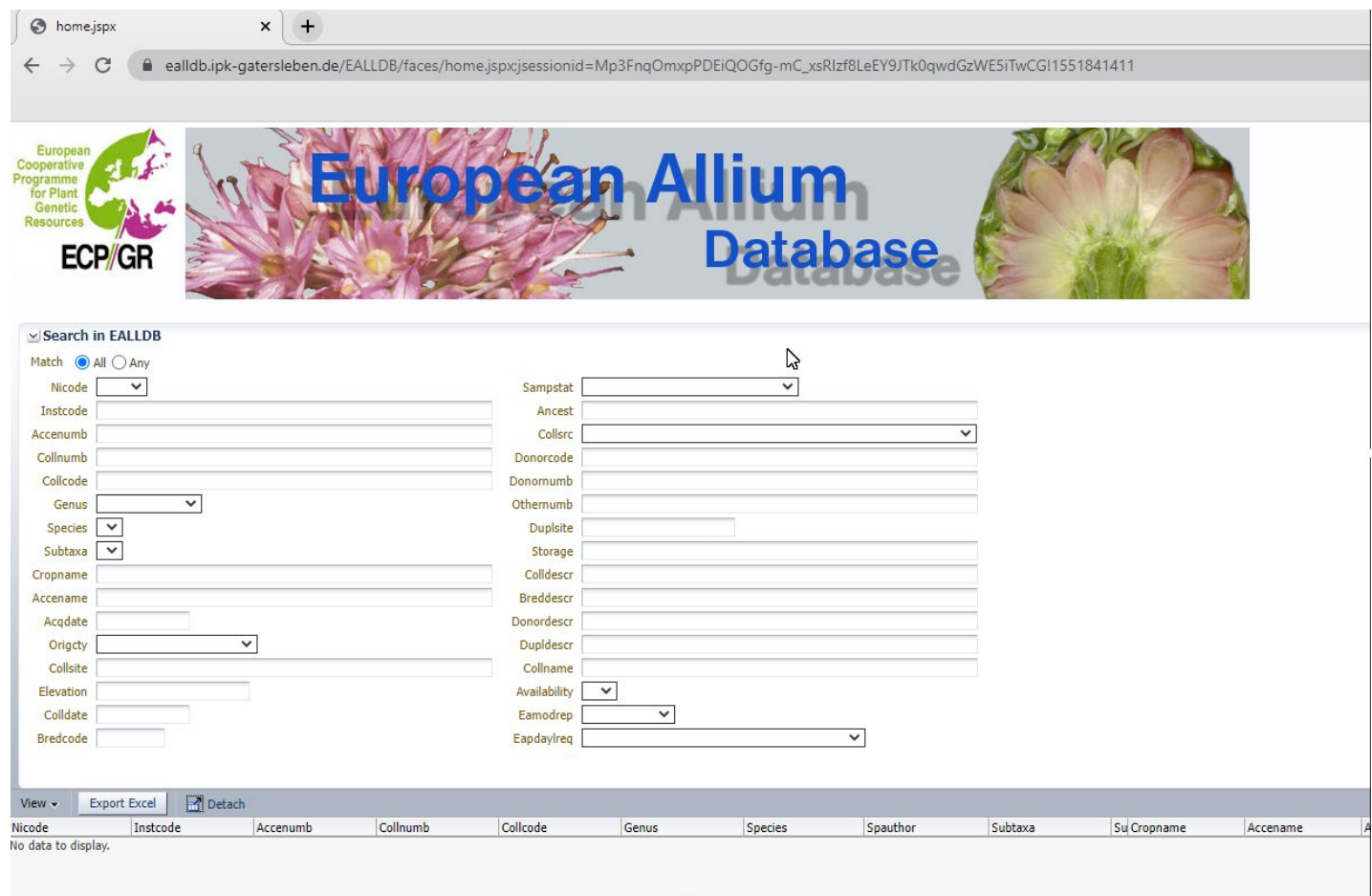


Uwe Scholz



Dörte Harpke

European Allium Database



home.jspx

ealldb.ipk-gatersleben.de/EALLDB/faces/home.jspxjsessionid=Mp3FnqOmxpPDEiQOGfg-mC_xsRlzf8LeEY9JTk0qwdGzWE5iTwCGI1551841411

European Cooperative Programme for Plant Genetic Resources
ECP/GR

European Allium Database

Search in EALLDB

Match All Any

Nicode

Instcode

Accenumb

Collnumb

Collcode

Genus

Species

Subtaxa

Cropname

Accename

Acqdate

Origcty

Collsite

Elevation

Colldate

Bredcode

Sampstat

Ancest

Collsrc

Donorcode

Donomumb

Othemumb

Duplsite

Storage

Colldescr

Breddescr

Donordescr

Dupldescr

Collname

Availability

Earmodrep

Eapdayreq

View

Nicode	Instcode	Accenumb	Collnumb	Collcode	Genus	Species	Spauthor	Subtaxa	Su Cropname	Accename
No data to display.										

<https://ealldb.ipk-gatersleben.de/>

I like to invite you to IPK Gatersleben
and to see the wonderful Allium collection

