



UNIVERSITY OF  
BIRMINGHAM



# UK *In situ* CWR Inventory

Tamsyn Dawson and Nigel Maxted

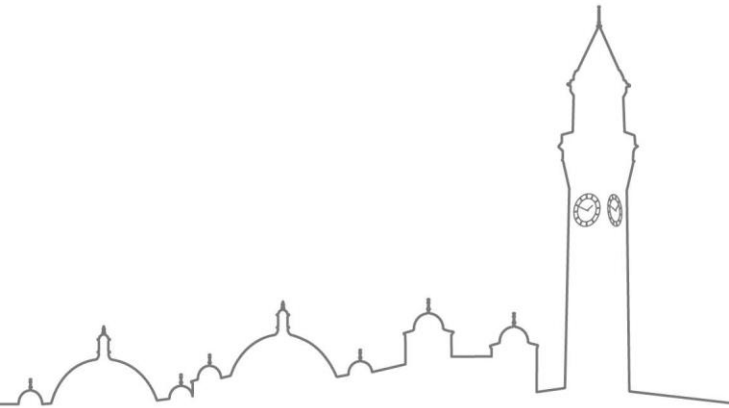
ECPGR '*CWR in situ* data in EURISCO' project presentations

15<sup>th</sup> December, Thessaloniki, Greece

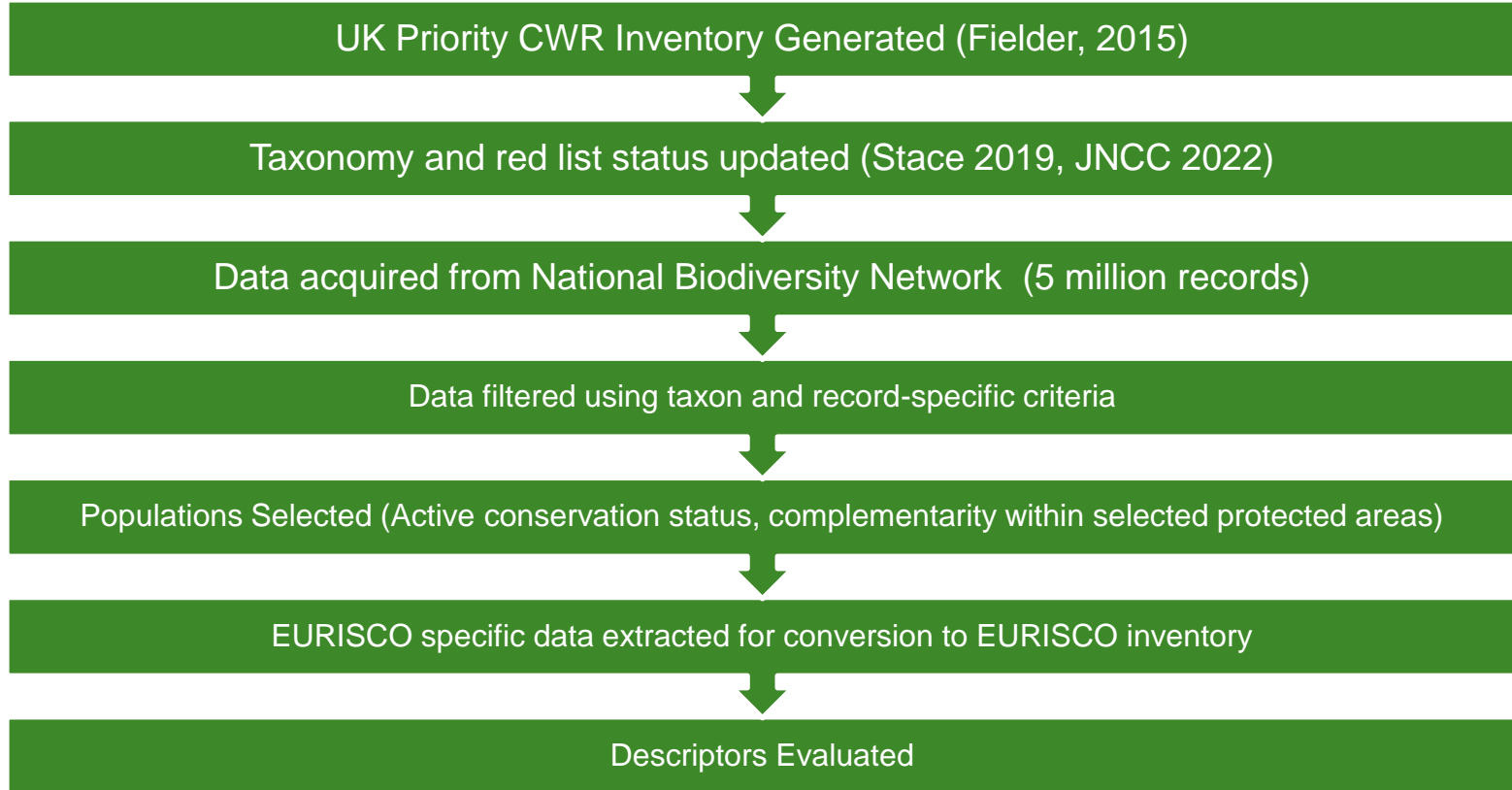


# Summary

- Methodology
- Summary of results
- Options for upload
- Descriptors of note
- Suggestions for EURISCO descriptors



# Workflow outline



# Methodology – Data Acquisition

NATIONAL BIODIVERSITY NETWORK TRUST   NBN FORUM   NBN ATLAS   LOG OUT

SEARCH

JOIN OR DONATE   NBN ATLAS NEWS   CONTACT US   MY PROFILE   LOG OUT   CHOOSE NBN ATLAS

NBN atlas

SPECIES   LOCATIONS ▾   ANALYSE   GET INVOLVED ▾   DATA AND PARTNERS ▾   ABOUT ▾   HELP

The NBN Atlas is the UK's largest repository of publicly available biodiversity data

Search the NBN Atlas

EXPLORE YOUR AREA  
Find out about the wildlife in your area

SEARCH FOR SPECIES  
Search the NBN Atlas

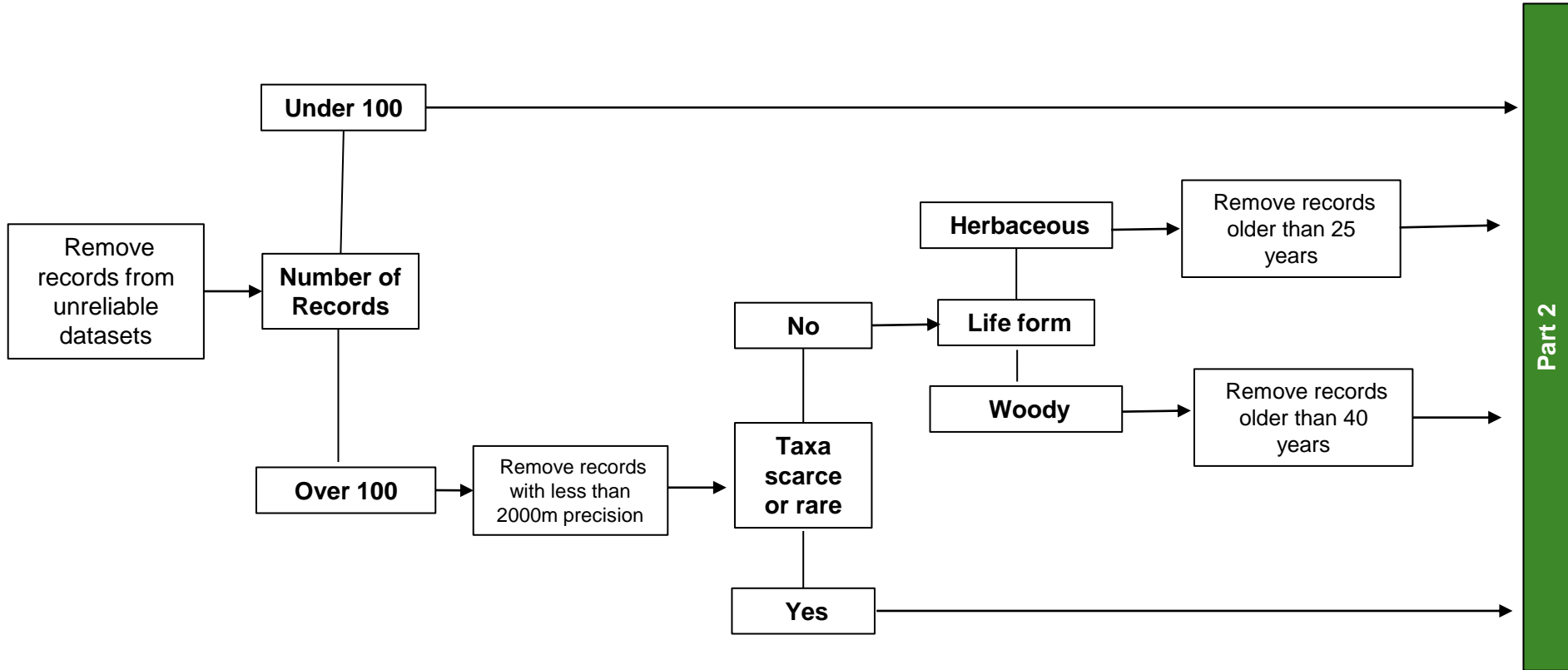
EDUCATION & ACADEMIA  
Is your institution using the NBN Atlas?

SHARE DATA  
How to record wildlife and share data

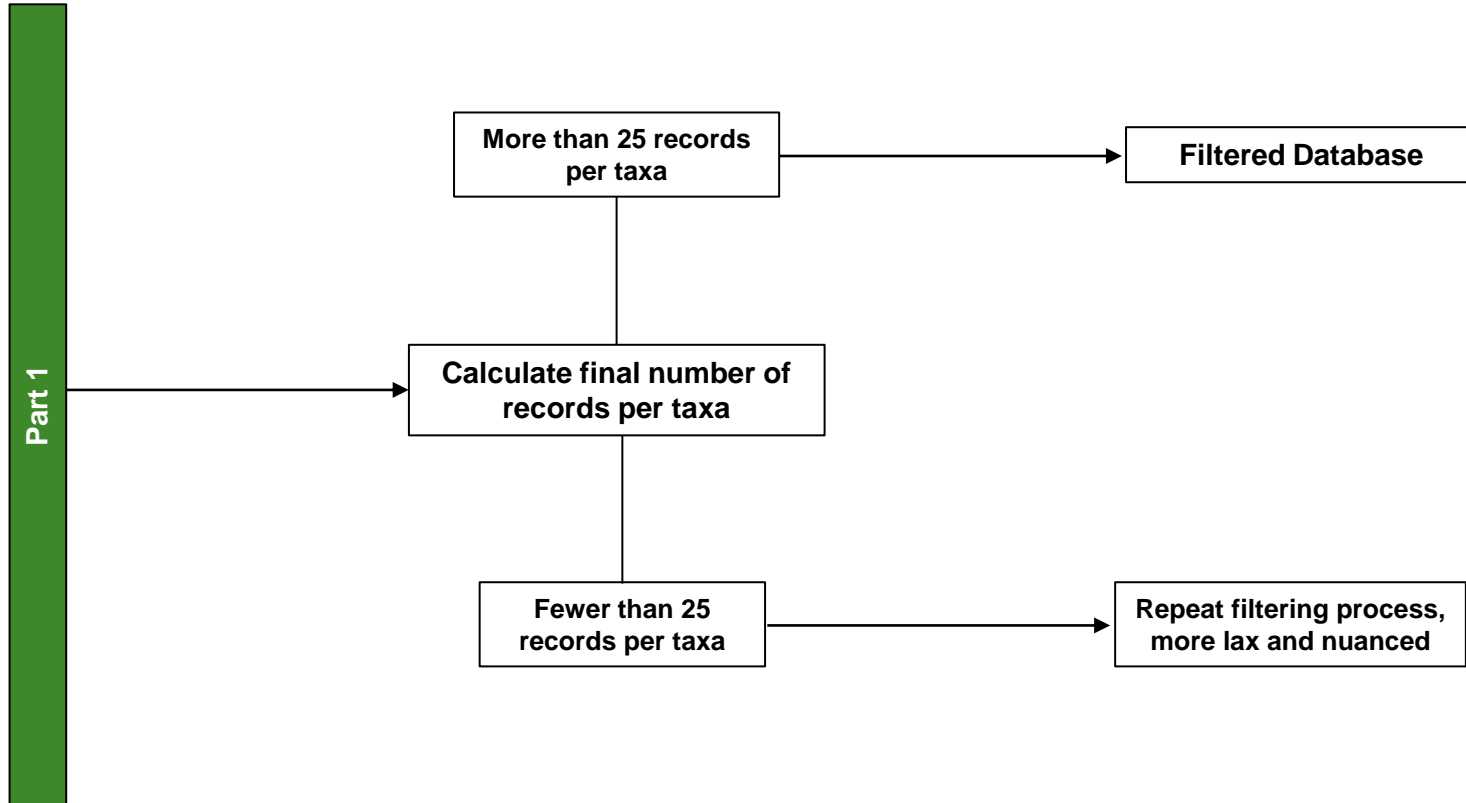
<https://nbn.org.uk>

5 million records  
acquired for 223  
taxa

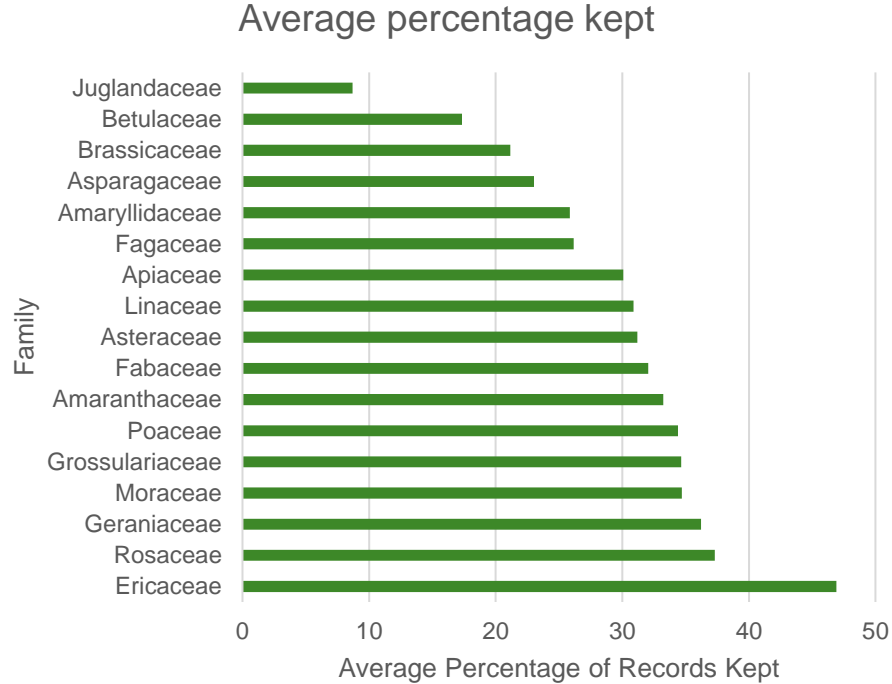
# Methodology – Filtering pt 1



# Methodology – Filtering pt 2

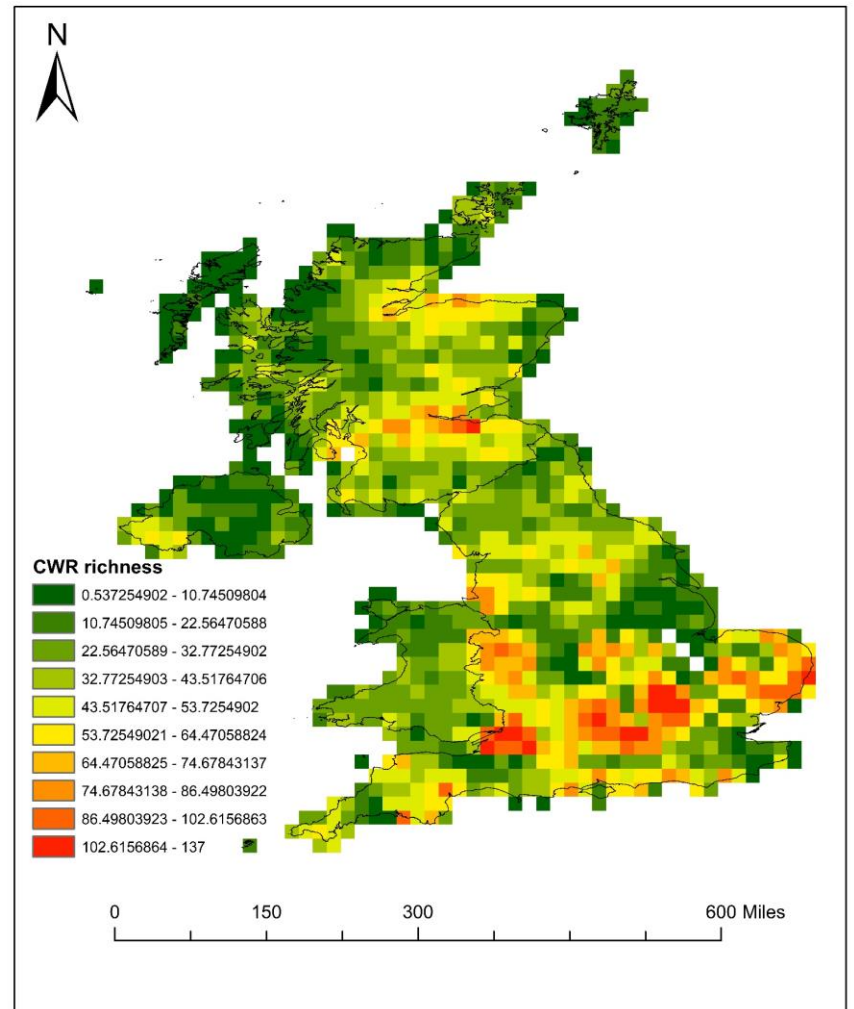


# Methodology – Filtering outcomes



# Results – UK Inventory

UK BAP Habitat	Richness
Acid grassland	120
Arable and horticulture	205
Bog	67
Broadleaved mixed and yew woodland	203
Built-up areas and gardens	206
Calcareous grassland	149
Coniferous woodland	161
Dwarf shrub and heath	157
Fen marsh and swamp	125
Improved grassland	210
Inland rock	78
Littoral rock	108
Littoral sediment	173
Neutral grassland	119
Standing open water and canals & Rivers and streams	152
Supralittoral rock	103
Supralittoral sediment	147





# Compilation

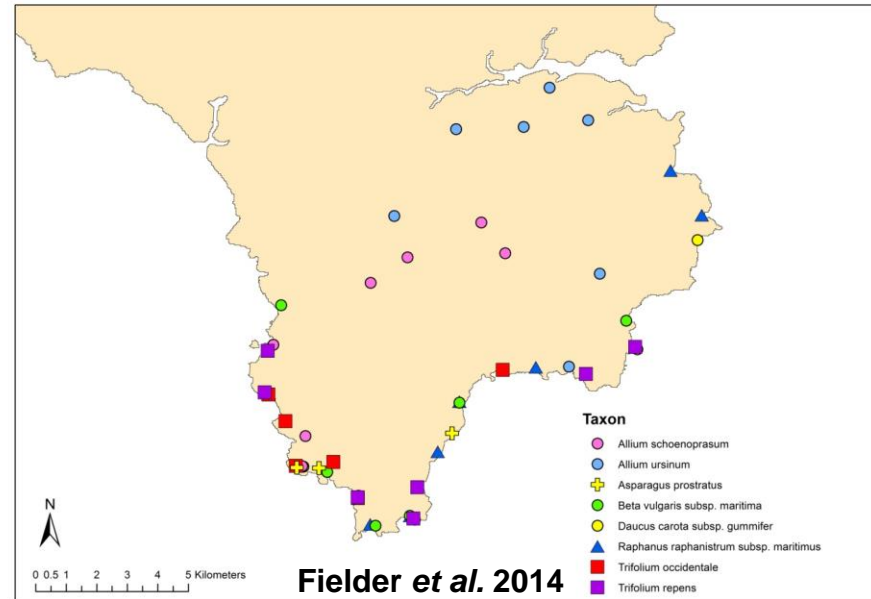
Attribute	Data required
Red List	JNCC
INSTNAME	Which INST for which taxa type
ACCENUMB	Genebank records
Elevation	LiDar DEM
Pop Src - status of occurrence site	CEH land use
Site Prot	PA sites
MANAGISNT	Management information of site

# Options for Upload

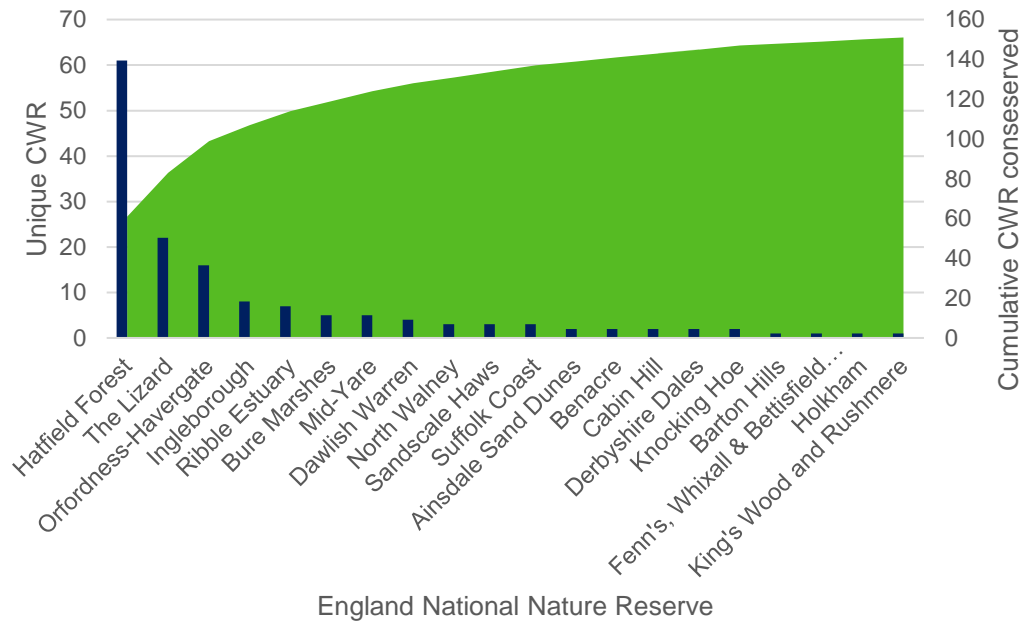
<b>Database</b>	<b># Taxa</b>	<b># Records</b>
<b>All UK Records</b>	222	612923
<b>Records within Protected Areas</b>	216	165935
<b>Top 20 NNRs</b>	144	4834
<b>Actively Conserved (Lizard)</b>	45	697

# Current Active conservation - Lizard

Genus	#Populations recorded
Agrostis	17
Allium	105
Alopecurus	1
Anthoxanthum	35
Arrhenatherum	1
Asparagus	45
Beta	4
Brassica	3
Bromus	19
Cynosurus	18
Dactylis	38
Erodium	2
Holcus	41
Koeleria	46
Linum	3
Lolium	6
Lotus	82
Medicago	2
Poa	5
Prunus	3
Raphanus	3
Rubus	7
Trifolium	210
Vicia	1



# Future Active conservation - England NNRs



- Involvement with Natural England
- Eventual aim to provide recommendations to land managers to promote active *in situ* conservation

# Descriptors of Note – Taxon Inventory

<b>Descriptor</b>	<b>Comments</b>
<b>TAXONID</b>	Used NBN taxon IDs. Taxonomy used was Stace 2019
<b>Genepool</b>	Used both Genepool and Taxon Group concepts
<b>NATIONAL_CAT</b>	Used the 2019 UK Red List assessment
<b>Dist_status</b>	Taken from Kew Plants of the World Online

# Descriptors of Note – Population level Inventory

## Descriptors – data entry different

POPID

LIAISONCODE

LIAISONNAME

CONSACTION

MLSSTAT

OCCURSITE

ELEVATION

POPSRC

## Descriptors – Not filled for all data

MNGINSTCODE

MNGINSTNAME

OTHERNUMB

HERBCODE

HERBNAME

SPECNUMB

CONSACTION

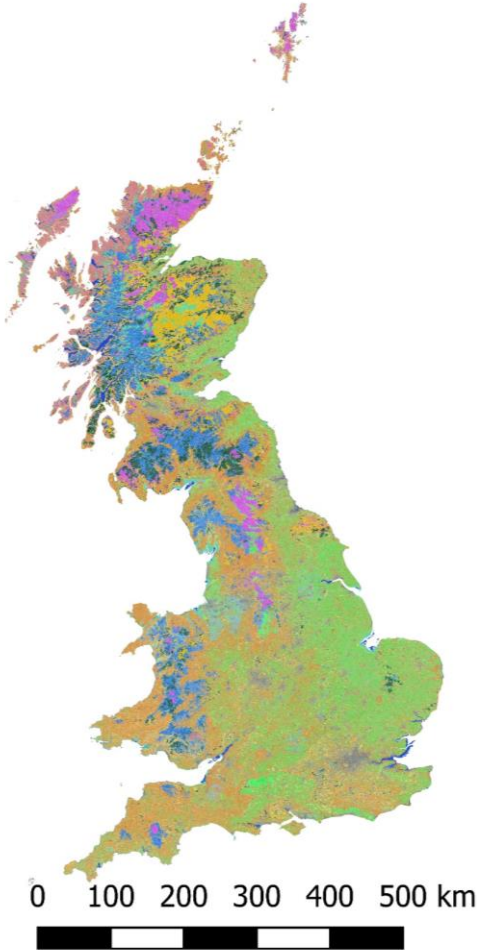
MLSSTAT

PUID

# Descriptors of Note – Land Cover

Data from CEH 2022

EURISCO POPSRC	Attribute	UK Land cover class
Wild	10	
Forest or woodland	11	Deciduous woodland, Coniferous woodland
Shrubland	12	Heather, Heather grassland
Grassland	13	Improved grassland, Neutral grassland, Calcareous grassland, Acid grassland, Fen
Desert	14	Not present in UK
Aquatic	15	Saltwater, Freshwater, Supralittoral rock, Supralittoral sediment, Littoral rock, Littoral sediment, Saltmarsh
Farm or cultivated	20	Arable
Field	21	
Orchard	22	
Backyard	23	
Fallow land	24	
Pasutre	25	
Park	28	
Weedy	60	
Roadside	61	
Field margin	62	
Other	99	Bog, Inland rock, urban, suburban



# Descriptors of Note – UK EURISCO dataset

Descriptor	
Liaison Code	Depends on outcome of UK PGR meeting
PUID	From Occurrence ID on NBN (data source)
ACCENUMB	
MLSSTAT	No duplicates available at present
Elevation data	Not directly provided by data source, acquired by join with UK DEM LiDAR data, covers >93% of England at 2m spatial resolution



# Descriptors of Note – EURISCO dataset

- STORAGE
- *In situ vs in nature*

<b>Type of germplasm storage</b>	<b>(STORAGE)</b>	not in the CWR-NI
For <i>in situ</i> CWR populations this descriptor should always have the value 60.		
60) <i>in situ</i> wild population		
<b>NOTE:</b> Status 60 is a new status! The description of this descriptor has been changed to apply to CWR <i>in situ</i> .		

# Descriptors of Note – EURISCO dataset

- Clarify AcceURL – is for relevant accession or link to information on population

<b>Accession URL</b>	<b>(ACCEURL)</b>	Links to associated information (LINKS)
URL linking to additional data about the population.		
Example: <a href="http://gbis.ipk-gatersleben.de/gbis_i/detail.jsf?akzessionId=31805">http://gbis.ipk-gatersleben.de/gbis_i/detail.jsf?akzessionId=31805</a>		
<b>NOTE:</b> This description deviates from the <i>ex situ</i> upload format.		

# Suggestions for EURISCO *in situ* dataset

- License type and attribution
- Including ADM1, ADM2
  
- Status of occurrence site – greater specificity e.g. UK BAP  
Broad habitats - Bog, mountains, not well covered

# Limitations (UK)

- Depends on previous data collection and resulting bias
- Limited active conservation
- No ground-truthing / verified *in situ*
- LIASON CODE will depend on outcome of UK PGR meeting
- Management priorities



Thank you!

