

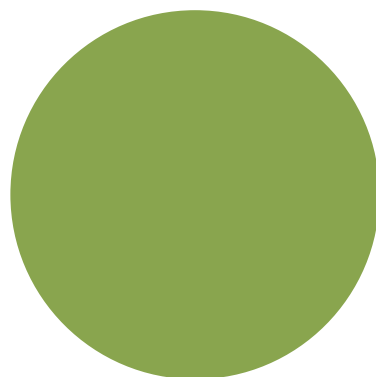
# Status of AEGIS candidate collection

## Number of AEGIS accessions per country of origin

| ECPG Activity | ORIGCTY | T. aestivum (6X) | T.spelta (6X) | Tetraploid wheat species (4X) | T.Monococcum (2X) | Secale cereale |
|---------------|---------|------------------|---------------|-------------------------------|-------------------|----------------|
| TRAID         | -       | -                | -             | -                             | -                 | -              |
| TRISECA       | BEL     | -                | 87            | -                             | -                 | -              |

## Status of sample in AEGIS collection

### Number of accessions



- Wild
- Weedy
- Traditional cultivar/Landrace
- Breeding/research material
- Advanced or improved cultivar
- GMO
- Other

**TRISECA Meeting**

3-4 October 2017, Radzikow, Poland



# Summary of passeport data (MCPD v2)

| Country    | Number of AEGIS accessions | INSTCODE  | ACCENUMB   | COLLNUMB   |
|------------|----------------------------|-----------|------------|------------|
| Belgium    | 87                         | 100 %     | 100 %      | 100 %      |
| COLLCODE   | GENUS                      | SPECIES   | SPAUTHOR   | SUBTAXA    |
| 100 %      | 100 %                      | 100 %     | 100 %      | 31 %       |
| SUBTAUTHOR | CROPNAME                   | ACCENAME  | ACQDATE    | ORIGCTY    |
| 0 %        | 100 %                      | 100 %     | 100 %      | 100 %      |
| COLLSITE   | LATITUDE                   | LONGITUDE | ELEVATION  | COLLDATE   |
| 68 %       | 68 %                       | 68 %      | 68 %       | 0 %        |
| BREDCODE   | SAMPSTAT                   | ANCEST    | COLLSRC    | DONORCODE  |
| 100 %      | 100 %                      | 0 %       | 100 %      | 0 %        |
| DONORNUMB  | OTHERNUMB                  | DUPLSITE  | STORAGE    | MLSSTAT    |
| 0 %        | 0 %                        | 0 %       | 100 %      | 100 %      |
| REMARKS    | GR_CLASS                   | PLOIDY    | REG_YEAR   | SYNONYM_   |
| 0 %        | 0 %                        | 0 %       | 0 %        | 0 %        |
| EXP_CODE   | SITE_DES                   | HERBAR_   | PRINC_ATTR | ENTRY_DATE |
| 0 %        | 0 %                        | 0 %       | 0 %        | 0 %        |
| MAN_CENTER | AVAILAB                    | AEGISSTAT |            |            |
| 0 %        | 0 %                        | 0 %       |            |            |

MANDATORY  
OPTIONAL

TRISECA Meeting

3-4 October 2017, Radzikow, Poland



European  
Cooperative  
Programme  
for Plant  
Genetic  
Resources



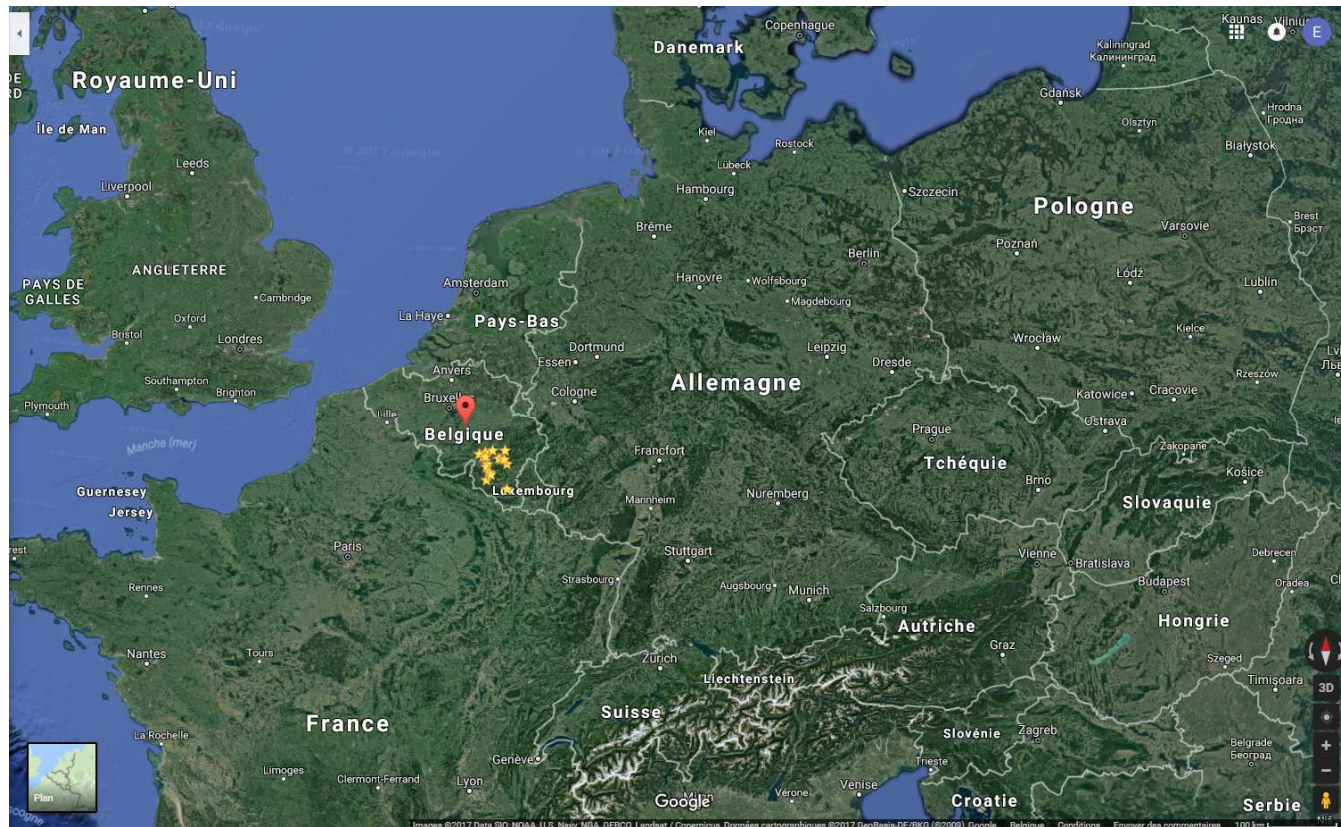
ECP/GR

# Summary of Characterisation & Evaluation data

| Country                   | Number of AEGIS accessions | II/I AWNEDNESS             | II/2 GRAIN COLOUR      |
|---------------------------|----------------------------|----------------------------|------------------------|
| BEL                       | 87                         | 100 %                      | 100 %                  |
| II/3 GLUME COLOUR         | II/4 GLUME HAIRINESS       | II/5 SPIKE DENSITY         | II/6 PLANT HEIGHT      |
| 100 %                     | 100 %                      | 100 %                      | 100 %                  |
| II/7 1000-KERNEL WEIGHT   | II/8 PROTEIN CONTENT       | II/9 PRINCIPAL UTILIZATION | II/10 YIELD LEVEL      |
| 100 %                     | 0 %                        | 0 %                        | 0 %                    |
| II/11 LODGING INTENSITY   | II/12 S TO STEM RUST       | II/13 S TO STRIPE RUST     | II/14 S TO LEAF RUST   |
| 100 %                     | 0 %                        | 0 %                        | 100 %                  |
| II/15 S TO POWDERY MILDEW | II/16 S TO LEAF BLOTCH     | II/17 S TO GLUME BLOTCH    | II/18 S TO HEAD BLIGHT |
| 100 %                     | 0 %                        | 0 %                        | 0 %                    |
| II/19 S TO EYESPOT        | II/20 S TO TAKE-ALL        | II/21 S TO TAN SPOT        | II/22 ZELENY TEST      |
| 0 %                       | 0 %                        | 0 %                        | 0 %                    |

BEL 001

# Diversity within the AEGIS collection: map of collecting sites of landraces (1/3)



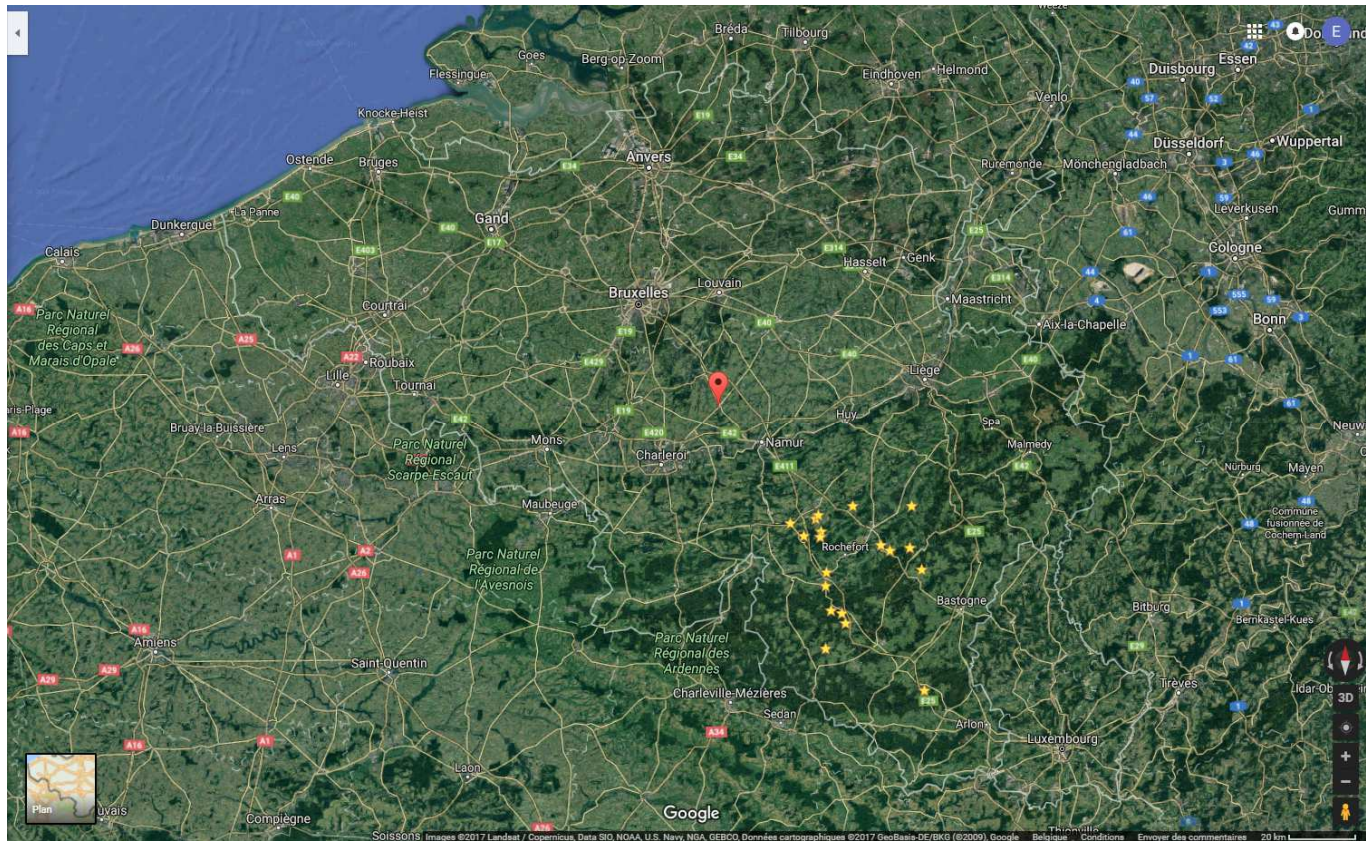
TRISECA Meeting

3-4 October 2017, Radzikow, Poland



BEL 001

# Diversity within the AEGIS collection: map of collecting sites of landraces (2/3)

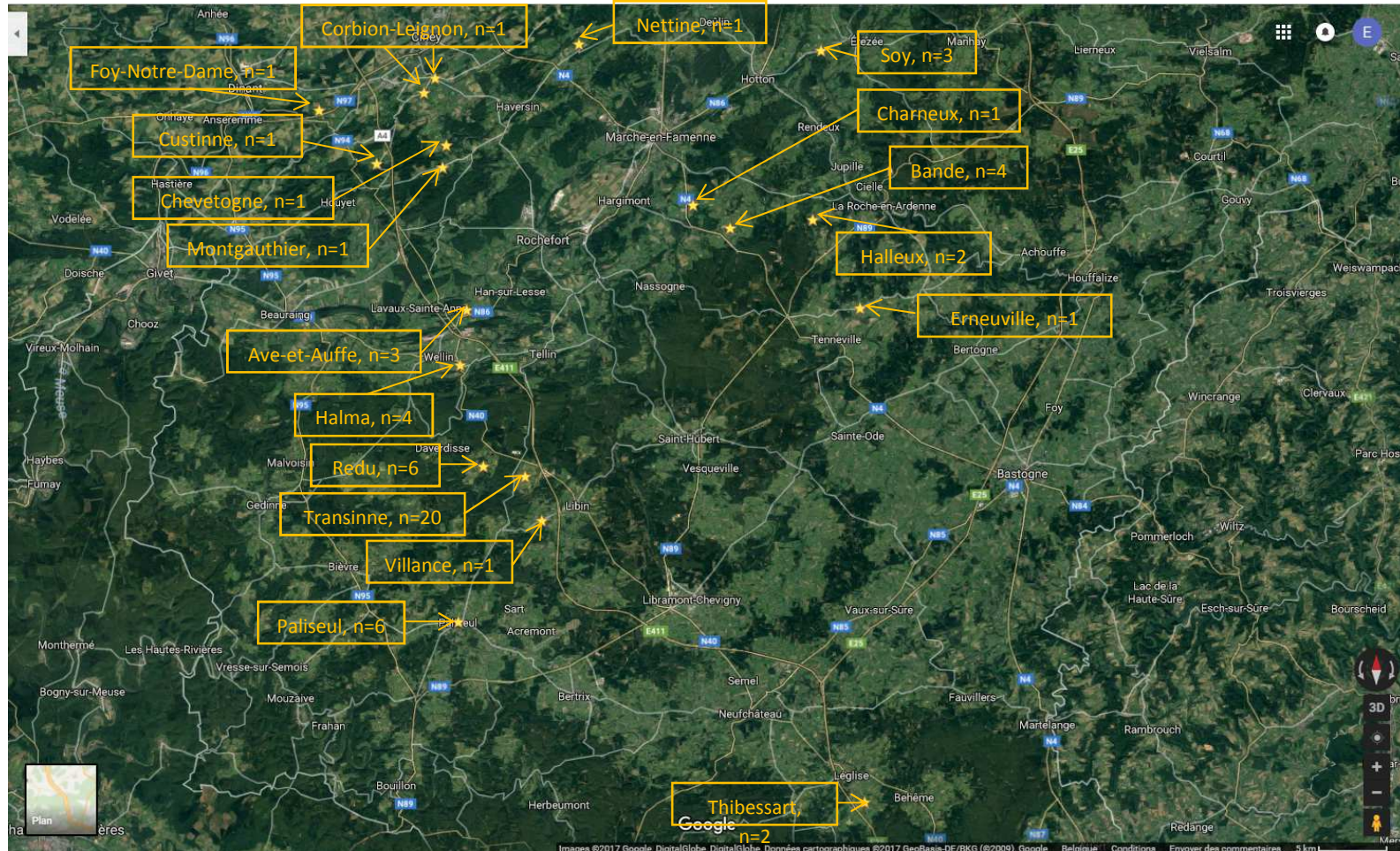


TRISECA Meeting

3-4 October 2017, Radzikow, Poland



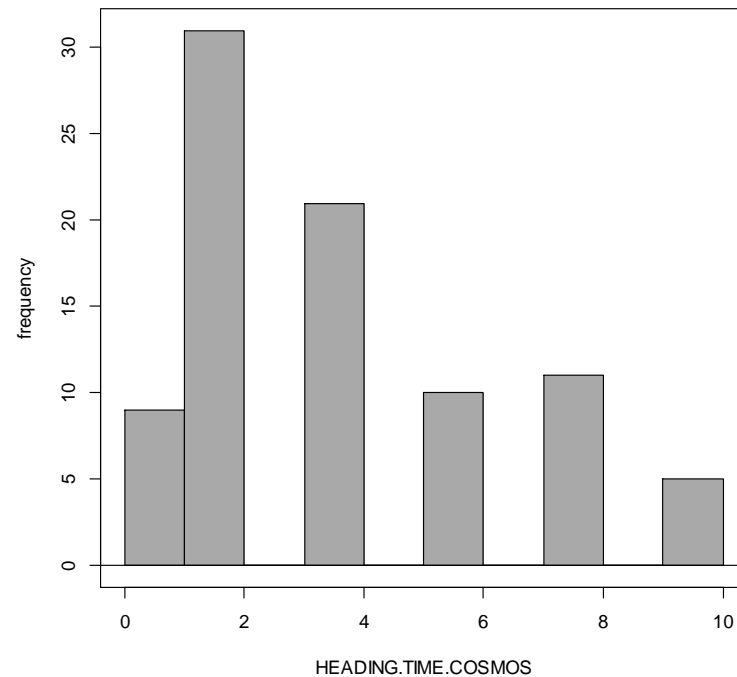
# Diversity within the AEGIS collection: map of collecting sites of landraces (3/3)



## Storage conditions or the accessions

- Sown each year for at least 20 years: availability for crossing and evaluation each year
  - Ears stored (n=30) in ventilated room and then in a cool room
- Since 2015: part of the material and continuation
  - Middle-term storage: 15 grams at 4/5 °C
  - Long-term storage: 1 protected ear from cross-pollination at -18/-20 °C

# Diversity within the AEGIS collection: earliness



- Landraces: late heading

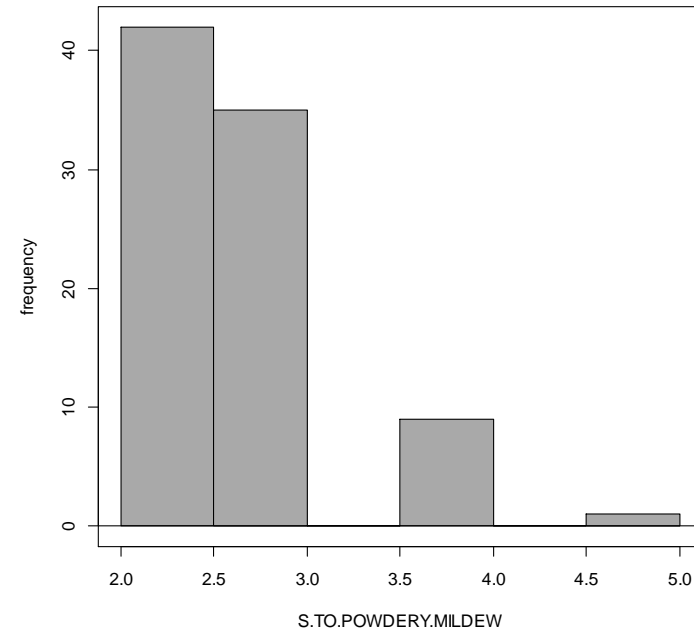
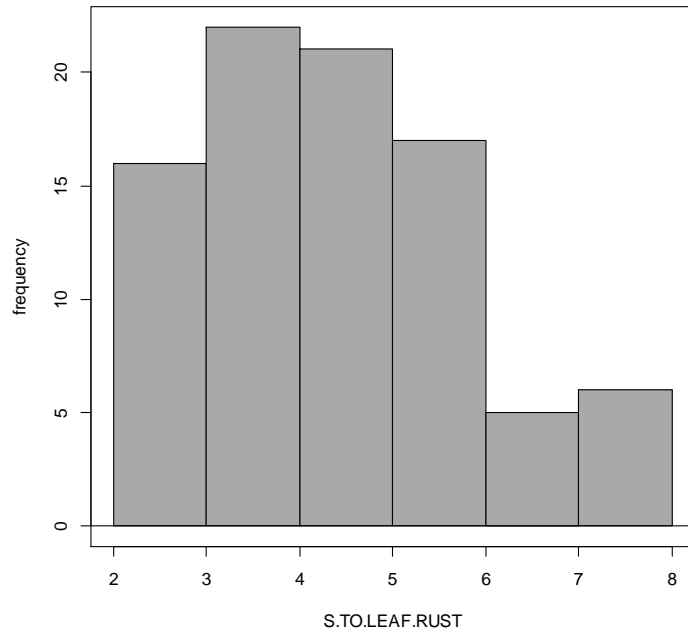
TRISECA Meeting

3-4 October 2017, Radzikow, Poland



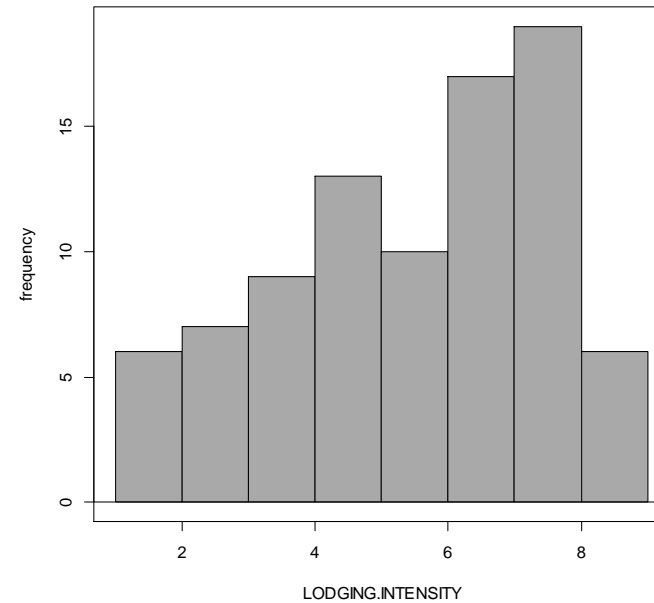
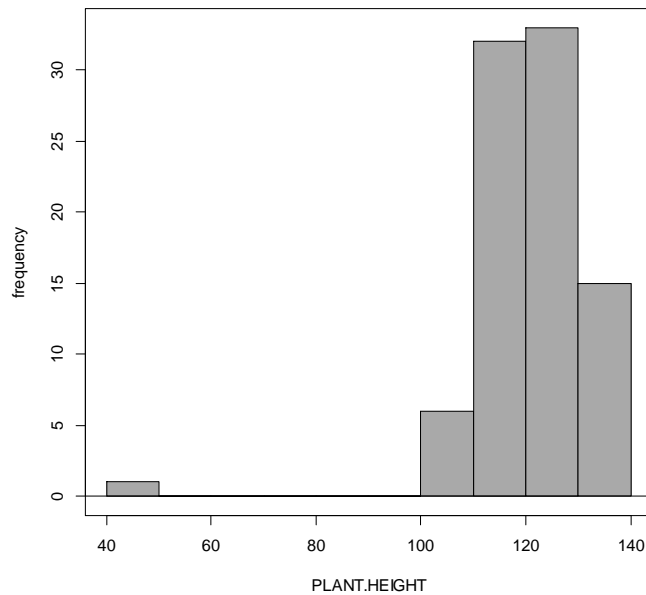


# Diversity within the AEGIS collection: leaf disease



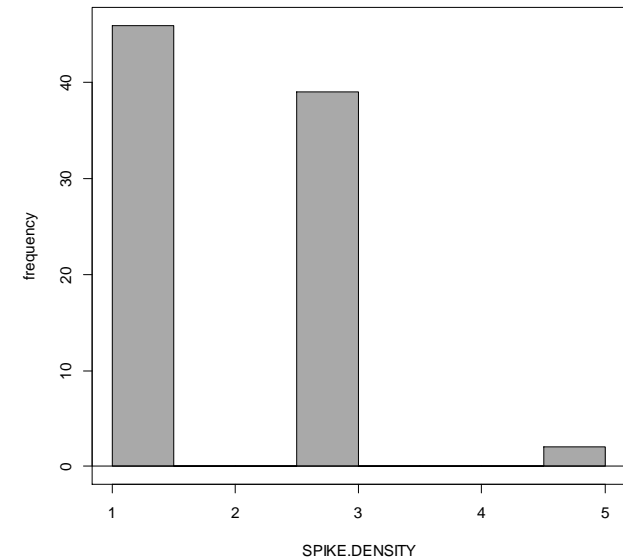
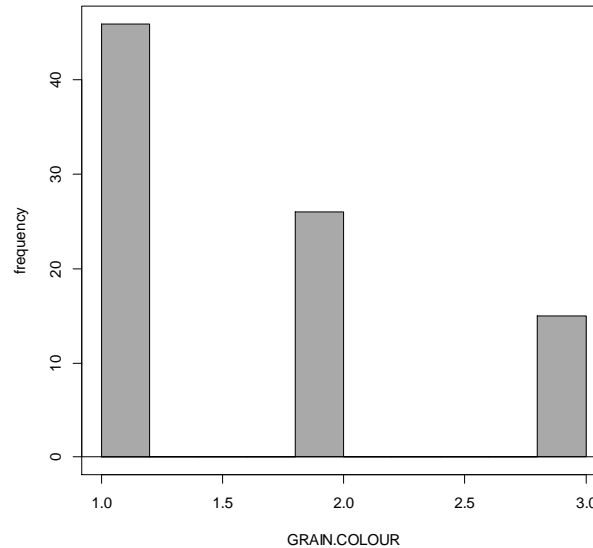
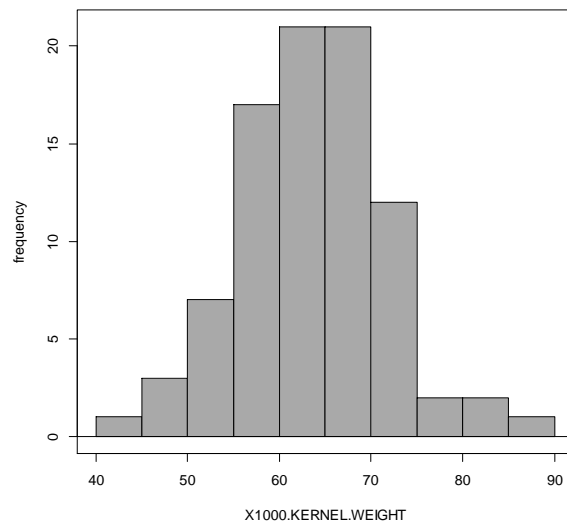
- Leaf rust : wide range of sensitivity
- Powdery mildew : low sensitivity for landraces

# Diversity within the AEGIS collection: plant



- Plant height : between 110 and 130 cm
- Lodging : characteristics of the species

# Diversity within the AEGIS collection: grain



- Grain colour : white yellow, max = light red
- Spike density: max= intermediate, majority very sparse

*Thank you for your attention*

**TRISECA Meeting**

3-4 October 2017, Radzikow, Poland

