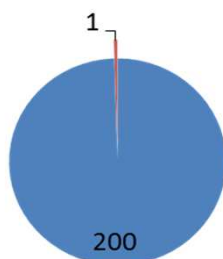


# Status of AEGIS candidate collection

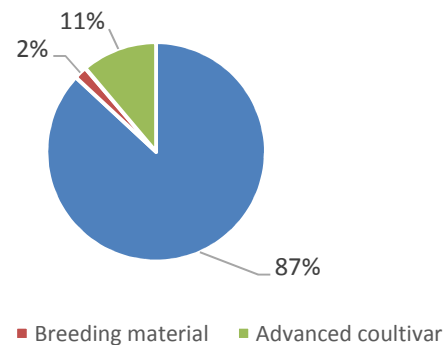
## Number of AEGIS accessions per country of origin

ECPG Activity	ORIGC TY	T. aestivum (6X)	T.spelta (6X)	tetraploid wheat species (4X)	T.Monococcum (2X)	Secale cereale
TRAID	POL	201				
TRISECA	POL					205
TRISECA	DEU					1

## Status of sample in AEGIS collection



TRAID



TRISECA

**TRISECA Meeting**

3-4 October 2017, Radzikow, Poland



European  
Cooperative  
Programme  
for Plant  
Genetic  
Resources



**ECP/GR**

# Summary of passport data (MCPD v2)

Country	Number of AEGIS accessions	INSTCODE	ACCENUMB	COLLNUMB
POL/DEU	141/1	100%	100%	85%
COLLCODE	GENUS	SPECIES	SPAUTHOR	SUBTAXA
36%	100%	100%	100%	28%
SUBTAUTHOR	CROPNAME	ACCENAME	ACQDATE	ORIGCTY
0%	100%	100%	72%	100%
COLLSITE	LATITUDE	LONGITUDE	ELEVATION	COLLDATE
57%	37%	37%	29%	36
BREDCODE	SAMPSTAT	ANCEST	COLLSRC	DONORCODE
5%	100%	6%	34%	44%
DONORNUMB	OTHERNUMB	DUPLSITE	STORAGE	MLSSTAT
28%	>1%	0%	100%	100%
REMARKS	GR_CLASS	PLOIDY	REG_YEAR	SYNONYM_
61%	100%	100%	11%	0%
EXP_CODE	SITE_DES	HERBAR_	PRINC_ATTR	ENTRY_DATE
0%	0%	0%	0%	0%
MAN_CENTER	AVAILAB	AEGISSTAT		
0%	100%	0%		

MANDATORY  
OPTIONAL

TRISECA Meeting

3-4 October 2017, Radzikow, Poland



European  
Cooperative  
Programme  
for Plant  
Genetic  
Resources



ECP/GR

# Summary of Characterisation & Evaluation data

Country	Number of AEGIS accessions	II/I AWNEDNESS	II/2 GRAIN COLOUR
POL/DEU	141/1	0%	0%
II/3 GLUME COLOUR	II/4 GLUME HAIRINESS	II/5 SPIKE DENSITY	II/6 PLANT HEIGHT
0%	0%	0%	100%
II/7 1000-KERNEL WEIGHT	II/8 PROTEIN CONTENT	II/9 PRINCIPAL UTILIZATION	II/10 YIELD LEVEL
100%	0%	0%	0%
II/11 LODGING INTENSITY	II/12 S TO STEM RUST	II/13 S TO STRIPE RUST	II/14 S TO LEAF RUST
0%	0%	0%	0%
II/15 S TO POWDERY MILDEW	II/16 S TO LEAF BLOTCH	II/17 S TO GLUME BLOTCH	II/18 S TO HEAD BLIGHT
52%	0%	0%	0%
II/19 S TO EYESPOT	II/20 S TO TAKE-ALL	II/21 S TO TAN SPOT	II/22 ZELENY TEST
0%	0%	0%	0%

## Other Characterisation & Evaluation

Country	Number of AEGIS accessions	Flowering date	Grain filling period
POL/DEU	141/1	6%	29%
vegetation period	Spike length (cm)	Number of grains per spike	Sprouting
29%	54%	53%	29%
Winterhardiness			
51%			

**TRISECA Meeting**

3-4 October 2017, Radzikow, Poland

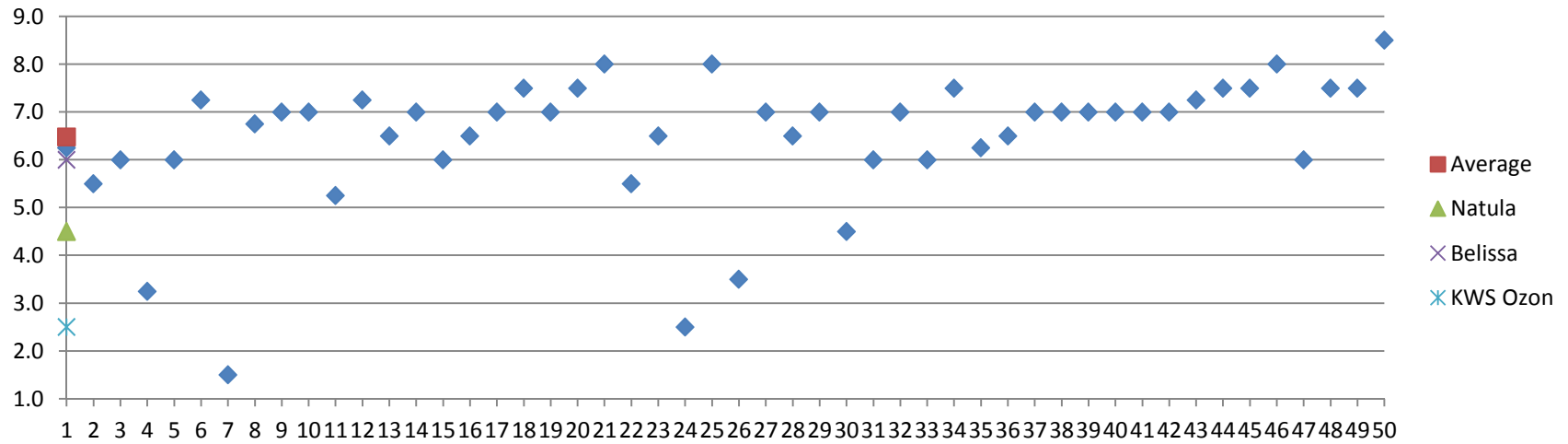


European  
Cooperative  
Programme  
for Plant  
Genetic  
Resources

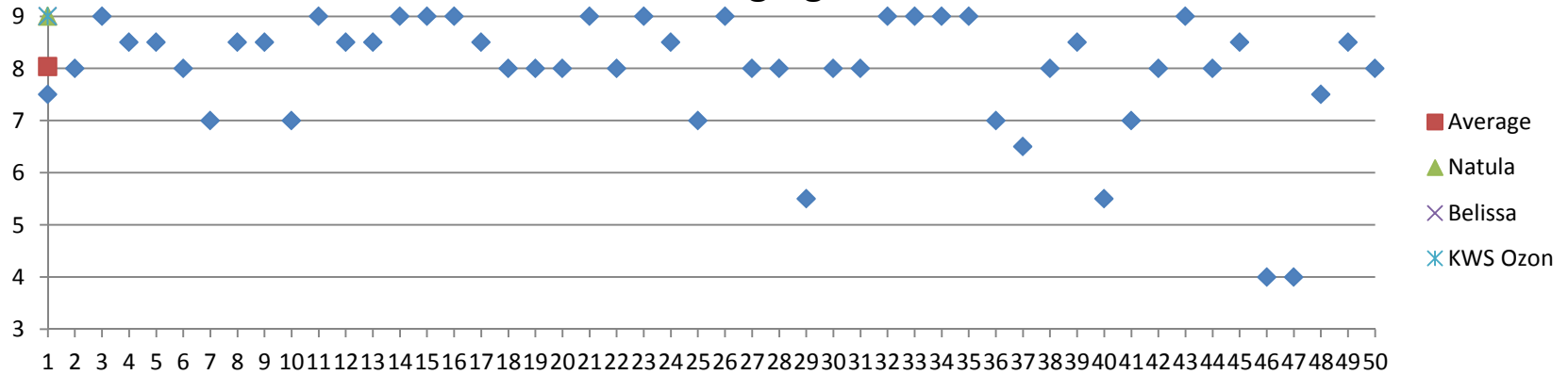


**ECP/GR**

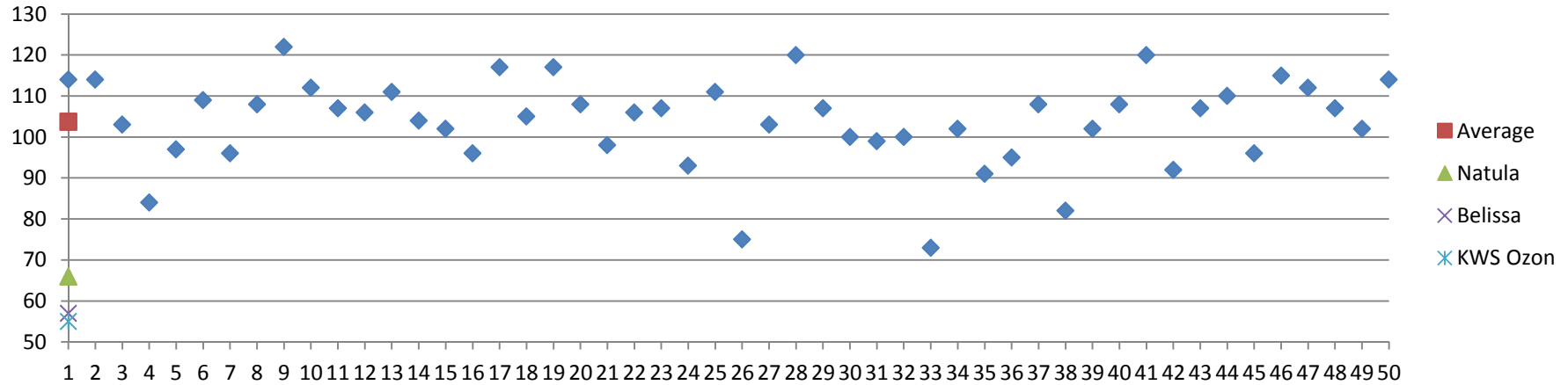
### Winter hardiness



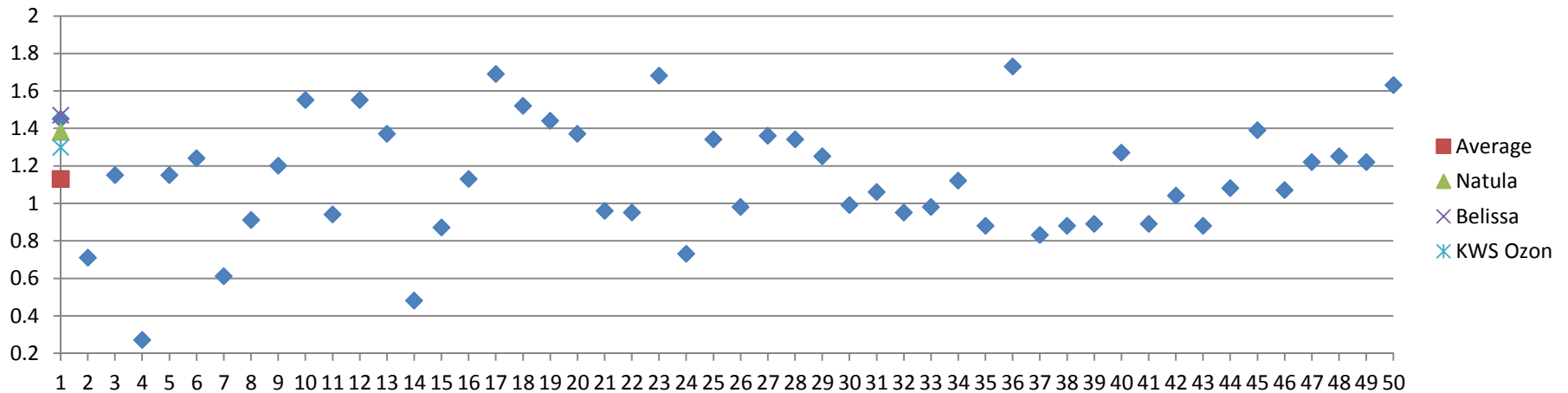
### Lodging



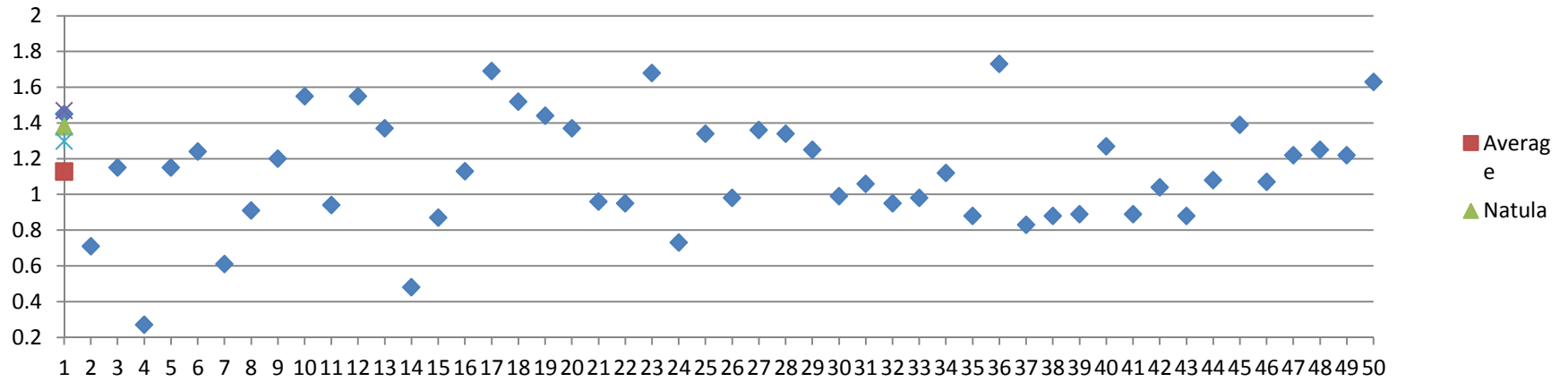
### Plant height



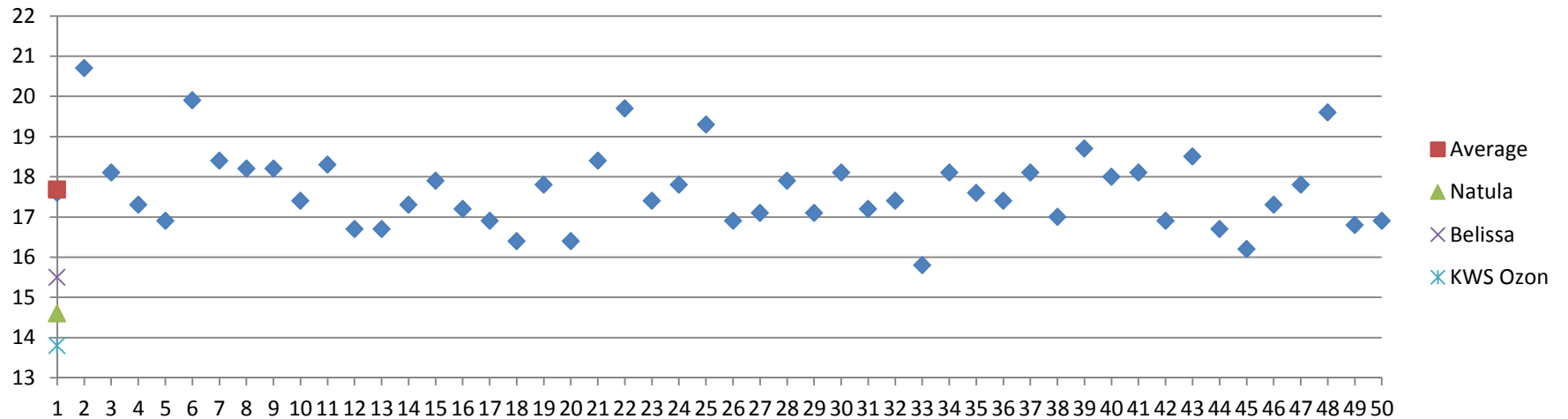
### Yield

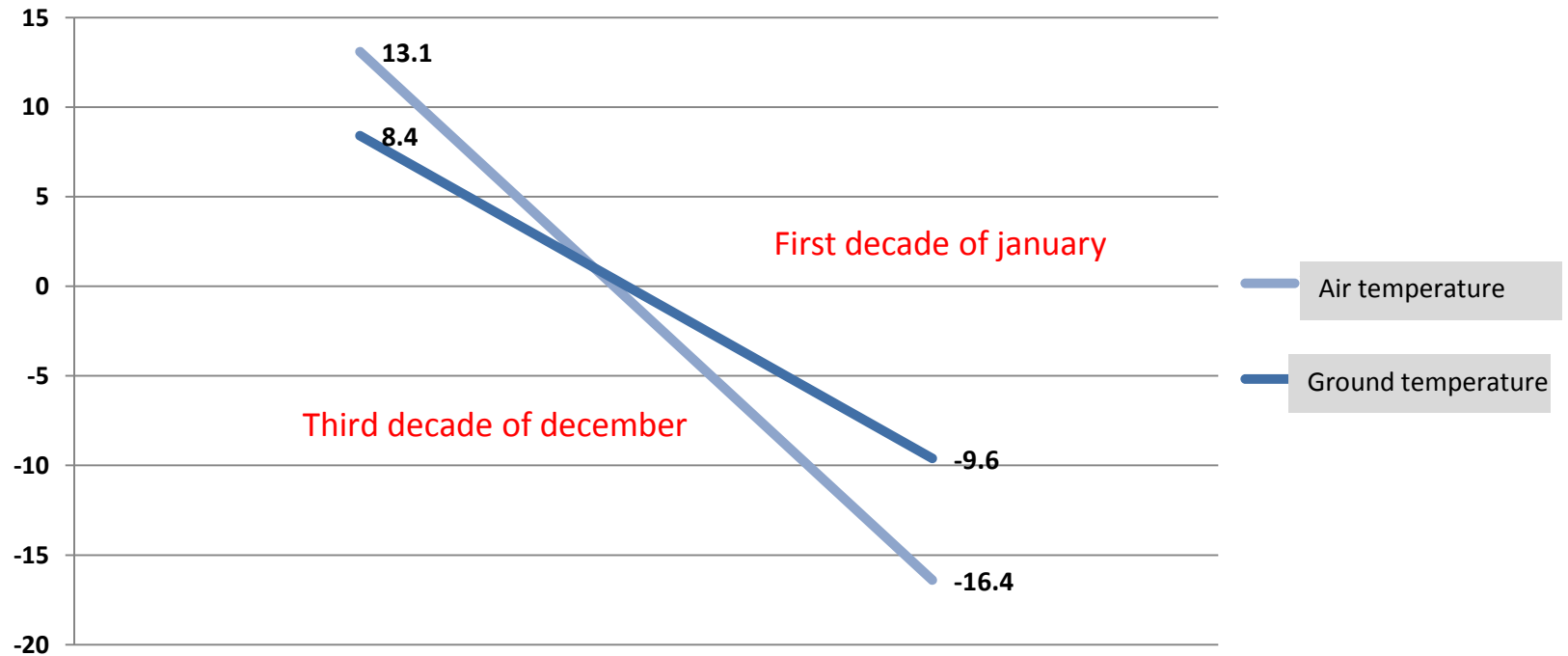


1000 kernel weight



Protein content (%)





## TRISECA Meeting

3-4 October 2017, Radzikow, Poland



European  
Cooperative  
Programme  
for Plant  
Genetic  
Resources



ECP/GR



Rainfall 2015/2016						
	I decade	II decade	III decade	Monthly	long-term mean	Difference
October	0	66,8	1,6	68,4	32,3	<b>36,1</b>
November	6,6	28,4	16	51	42,8	8,2
January	14,6	7,2	3,4	25,2	28,6	-3,4
February	0,6	32,8	31,8	65,2	28,7	<b>36,5</b>
March	8,4	6,2	12,2	26,8	29,5	-2,7
April	3,8	2,4	8,2	14,4	31,2	<b>-16,8</b>
May	14,2	7,4	7,6	29,2	47,4	<b>-18,2</b>
June	12,2	23,2	0,2	35,6	62,8	<b>-27,2</b>

POL003



**TRISECA Meeting**

3-4 October 2017, Radzikow, Poland



European  
Cooperative  
Programme  
for Plant  
Genetic  
Resources



**ECP/GR**